

THERESA G. ROJAS, ESQ.

Legal Counsel

Guam Waterworks Authority

Gloria B. Nelson Public Service Building

688 Route 15, Suite 304

Mangilao, Guam 96913

Telephone No: (671) 300-6848

Fax No: (671) 648-3290

Email: tgrojas@guamwaterworks.org



BEFORE THE GUAM PUBLIC UTILITIES COMMISSION

IN THE MATTER OF:

) GWA DOCKET NO. 22-05

) NOTICE OF FILING:

) GWA RESOLUTION NO. 07-FY2022

**THE PETITION OF THE GUAM
WATERWORKS AUTHORITY TO
PROCURE AN INDEFINITE DELIVERY/
INDEFINITE QUANTITY DESIGN-BUILD
SERVICES CONTRACT AND AN
INDEFINITE DELIVERY/ INDEFINITE
QUANTITY PROFESSIONAL PROJECT/
CONSTRUCTION MANAGEMENT
SERVICES CONTRACT FOR GWA'S
ISLANDWIDE SEWER COLLECTION/
TRANSMISSION SYSTEM REPAIR,
REHABILITATION, AND REPLACEMENT
PROJECT.**

COMES NOW, the GUAM WATERWORKS AUTHORITY ("GWA"), by and through its counsel of record, THERESA G. ROJAS, ESQ., and hereby files GWA Resolution No. 07-FY2022, as approved by the CCU on January 25, 2022, and its supporting exhibits (A-01 to A-36), in support of GWA's January 7, 2022, Petition to PUC for GWA to Procure an ID/IQ Design-Build Contract and an ID/IQ Professional Project/Construction Management Contract for GWA's Islandwide Sewer Collection/Transmission System Repair, Rehabilitation, and Replacement Project.

RESPECTFULLY SUBMITTED this 27th day of January, 2022.

Theresa G. Rojas

By:

THERESA G. ROJAS
GWA Legal Counsel

Digitally signed by Theresa G.
Rojas
Date: 2022.01.27 10:18:02
+10'00'



CONSOLIDATED COMMISSION ON UTILITIES
Guam Power Authority | Guam Waterworks Authority
P.O. Box 2977 Hagatna, Guam 96932 | (671)649-3002 | guamccu.org

GWA RESOLUTION NO. 07-FY2022

RELATIVE TO REQUESTING APPROVAL TO PROCURE AN INDEFINITE DELIVERY/INDEFINITE QUANTITY DESIGN-BUILD SERVICES CONTRACT AND AN INDEFINITE DELIVERY/INDEFINITE QUANTITY PROFESSIONAL PROJECT/CONSTRUCTION MANAGEMENT SERVICES CONTRACT FOR GWA'S ISLANDWIDE SEWER COLLECTION/TRANSMISSION SYSTEM REPAIR, REHABILITATION, AND REPLACEMENT PROJECT

WHEREAS, under 12 G.C.A. § 14105, the Consolidated Commission on Utilities ("CCU") has plenary authority over financial, contractual and policy matters relative to the Guam Waterworks Authority ("GWA"); and

WHEREAS, the Guam Waterworks Authority is a Guam Public Corporation established and existing under the laws of Guam; and

WHEREAS, GWA's public wastewater collection/transmission system, consisting of gravity mains, manholes (MH), laterals, force mains (FM), and related appurtenances, is in need of repair, rehabilitation, or replacement in various locations island-wide; and

WHEREAS, the GWA public wastewater collection/transmission system, is in occasional need of design-build services to address emergency repairs that exceed in-house resources; and

WHEREAS, GWA endeavors to enter into a contract to repair, rehabilitate, or replace the wastewater collection/transmission system for the protection of human and environmental health, and in anticipation of a consent decree with the United States Environmental Protection Agency (USEPA); and

WHEREAS, a variety of repair methods will be considered and used, to include Cured-in-Place-Pipe (CIPP), spot repairs, open-trench pipe replacement depending on the situation and

1 location of sewer, with a primary consideration to minimize impacts while ensuring continuity
2 and quality of service, which require specialized services; and
3

4 **WHEREAS**, funding is available through bonds identified on the GWA Capital
5 Improvements Plan, grants, internally funded capital improvement program (IFCIP) funds, and
6 System Development Charge Funds; and
7

8 **WHEREAS**, GWA is seeking an experienced and qualified sewer design-build
9 contractor to provide Indefinite Delivery – Indefinite Quantity (IDIQ) Sewer
10 Collection/Transmission System Repair, Rehabilitation, and Replacement services while
11 ensuring continuity of sewer service to customers and minimizing adverse impacts to the island;
12 and
13

14 **WHEREAS**, the IDIQ design-build contractor will be selected through a Multi-step
15 Sealed Bidding, consisting of a first step during which bidders submit un-priced technical offers
16 to be evaluated by GWA and a second step, under which those bidders whose technical offers
17 have been qualified under the criteria set forth during the first step solicitation, provide priced,
18 sealed bids; and
19

20 **WHEREAS**, GWA is seeking experienced and qualified professionals to provide IDIQ
21 Project/Construction Management services to support the IDIQ design-build of the Sewer
22 Collection/Transmission System Repair, Rehabilitation, and Replacement project; and
23

24 **WHEREAS**, the IDIQ Project/Construction Management services will be procured
25 through a request for proposals; and
26

27 **WHEREAS**, project locations to be considered include, but are not limited to, the
28 following sites identified in GWA's 2018 Water Resources Master Plan Update: Route 10
29 Barrigada gravity sewer, Route 1 Piti gravity sewer, Finile Drive Agat gravity sewer, and Route
30 1 Asan force main (see Exhibit A), with other locations to be determined based on priority and
31 funding; and
32

1 **WHEREAS**, due to the multiple sewer locations in need of repair, rehabilitation, or
2 replacement, multiple contracts per IDIQ procurement will be considered; and

3
4 **WHEREAS**, the design and construction cost of the identified projects were estimated to
5 total Thirteen Million Thirty Thousand Dollars (\$13,030,000.00) in the 2018 Master Plan (see
6 Exhibit A) and additional projects or escalation factors occurring since the original estimates
7 were prepared may increase the contract value; and

8
9 **WHEREAS**, the cost of IDIQ project/construction management contract is anticipated to
10 exceed One Million Dollars (\$1,000,000.00) based on the current construction management
11 contract for the Asan-Adelup-Hagatna Route 1 Sewerline Rehabilitation and Replacement
12 Project (see Exhibit B); and

13
14 **WHEREAS**, the Public Utilities Commission (PUC) contract review protocol requires
15 GWA to obtain approval prior to advertising procurement for projects with an anticipated value
16 of One Million Dollars (\$1,000,000.00) or greater; and

17
18 **WHEREAS**, the CCU must approve all petitions to the PUC.

19
20 **NOW BE IT THEREFORE RESOLVED**, that the Consolidated Commission on
21 Utilities does hereby approve the following:

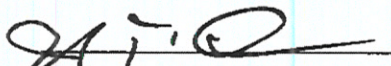
- 22 1. The recitals set forth above hereby constitute the findings of the CCU.
- 23 2. The CCU finds that the IDIQ Design-Build Sewer Collection/Transmission
24 System Repair, Rehabilitation, and Replacement is necessary for the protection of
25 human and environmental health, and to meet the anticipated consent decree with
26 the United States Environmental Protection Agency.
- 27 3. The CCU finds that the IDIQ Professional Project/Construction Management
28 Sewer Collection/Transmission System Repair, Rehabilitation, and Replacement
29 is necessary to support the IDIQ Design-Build Sewer Collection/Transmission
30 System Repair, Rehabilitation, and Replacement Project.
- 31 4. The CCU hereby further approves management to submit a petition to the PUC
32 for the procurement of one IDIQ Design-Build solicitation and one IDIQ

1 Project/Construction Management solicitation for island-wide sewer repair,
2 rehabilitation, and replacement.

3
4 **RESOLVED**, that the Chairman certified and the Board Secretary attests to the adoption
5 of this Resolution.

6
7 **DULY AND REGULARLY ADOPTED**, this 25th day of January, 2022.

8
9 Certified by:

10
11 
12 **JOSEPH T. DUENAS**
13 Chairperson

Attested by:

14
15 
16 **MICHAEL T. LIMTIACO**
17 Secretary

18
19 **SECRETARY'S CERTIFICATE**

20 I, Michael T. Limtiaco, Board Secretary of the Consolidated Commission on Utilities as
21 evidenced by my signature above do hereby certify as follows:

22 The foregoing is a full, true and accurate copy of the resolution duly adopted at a regular
23 meeting by the members of the Guam Consolidated Commission on Utilities, duly and
24 legally held at a place properly noticed and advertised at which meeting a quorum was
25 present and the members who were present voted as follows:

26 **AYES:** 5

27 **NAYS:** 0

28 **ABSENT:** 0

29 **ABSTAIN:** 0



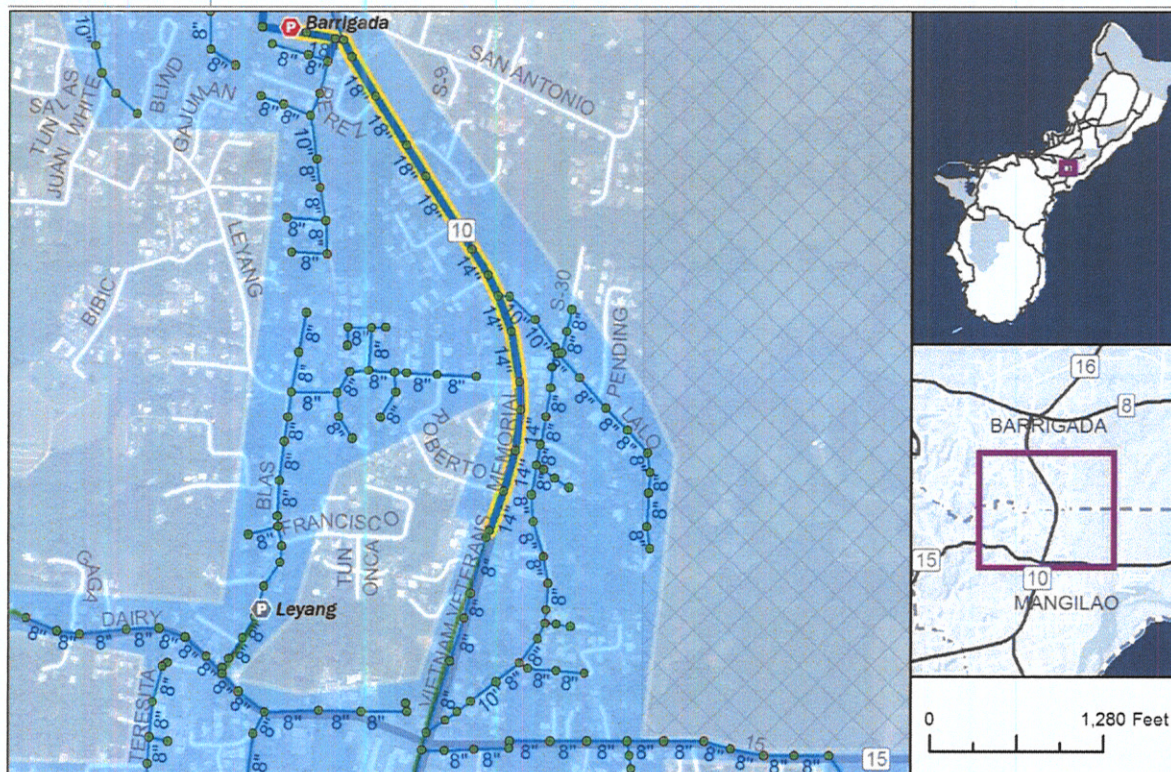
EXHIBIT A

GWA Master Plan Projects

| Number | Project | Cost Estimate |
|---------------|--|---------------|
| MP-WW-Pipe-02 | Barrigada Pump Station Pipe Rehabilitation/Replacement | \$5,420,000 |
| MP-WW-Pipe-03 | Route 1 Piti Pipe Rehabilitation/Replacement | \$4,480,000 |
| MP-WW-Pipe-26 | Finile Drive Rehabilitation – Agat | \$830,000 |
| MP-WW-FM-03 | Route 1 Asan Force Main Rehabilitation/Replacement | \$2,300,000 |
| Total | | \$13,030,000 |

Barrigada Pump Station Pipe Rehabilitation/Replacement

| | | | |
|----------------------------|---|--------------|---------|
| Project Number | MP-WW-Pipe-02 | Basin | Hagåtña |
| Description | Replace approximately 4,420 feet of gravity piping along Route 10 from the Mangilao force main to the Barrigada pump station (shown below in yellow). Section 8 discusses I/I issues along this pipeline that should be investigated before replacing this pipeline. | | |
| Justification | The original pipeline liner is blistering and separating from the pipe. The pipeline will probably need to be replaced. | | |
| Proposed Schedule | Begin Design: 2022 | | |
| Cost Estimate | \$5.42M | | |
| Reference Documents | WRMPU Volume 3, Section 4, Table 4-13 | | |

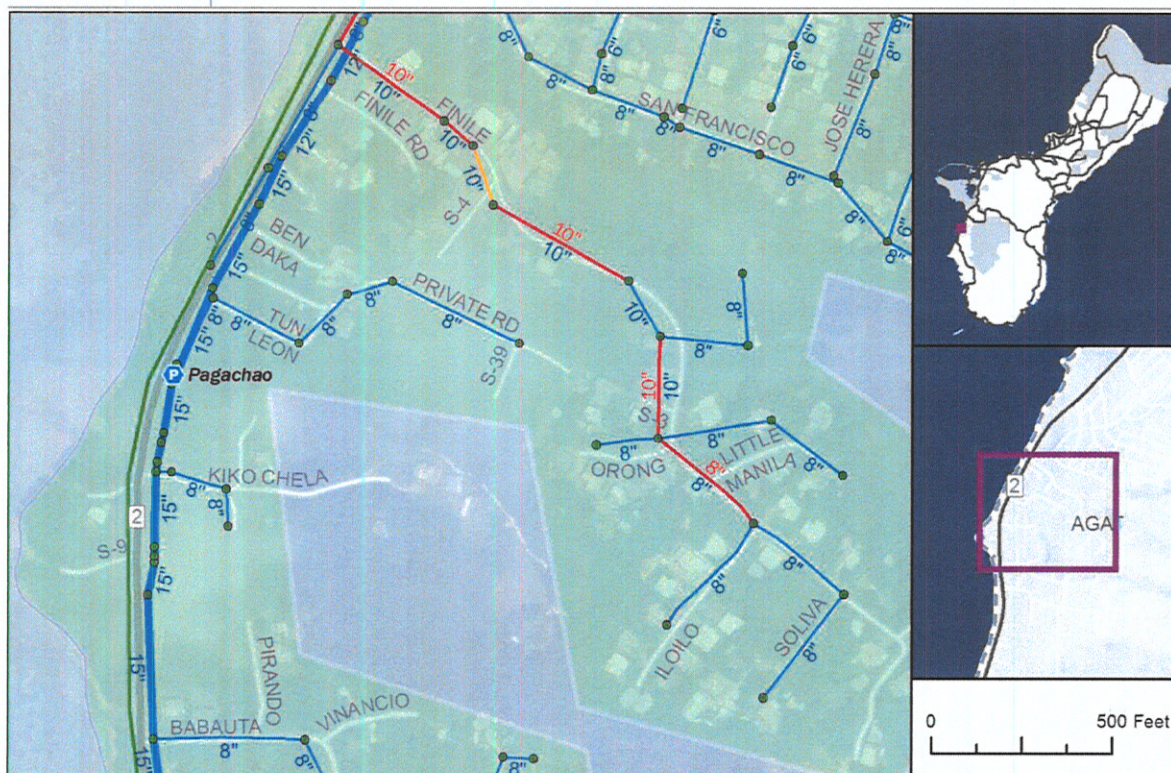


This proposed project is subject to change. Projects will generally include an engineering study, detailed design, and field verification to refine the exact project scope and budget. Costs are presented in 2017 dollars and do not account for increases due to inflation and escalation. See Volume 1, Appendix D for cost estimate assumptions.

Brown AND Caldwell

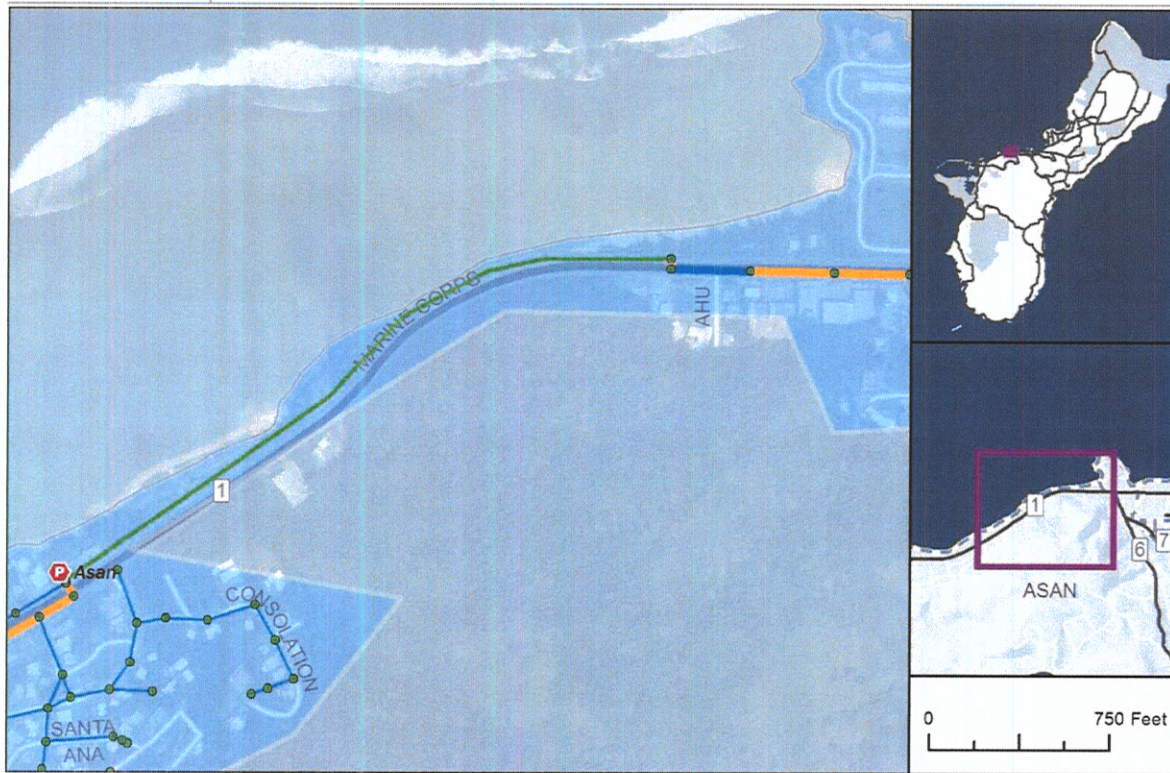
Finile Drive Rehabilitation - Agat

| | | | |
|---------------------|---|-------|------|
| Project Number | MP-WW-Pipe-26 | Basin | Agat |
| Description | Rehabilitate or replace approximately 1,540 feet of gravity piping in Agat along Finile Drive (shown below in red and orange). The project will evaluate the use of CIPP options and open cut and replace construction to complete the necessary repairs. | | |
| Justification | This piping has been identified by field investigation to be in very poor condition and requires rehabilitation or replacement. | | |
| Proposed Schedule | Begin Design: 2019 | | |
| Cost Estimate | \$830,000 | | |
| Reference Documents | Southern SSES Rehabilitation - Phase 1 (Agat-Santa Rita-Umatac-Merizo) (BC, 2016) | | |



This proposed project is subject to change. Projects will generally include an engineering study, detailed design, and field verification to refine the exact project scope and budget. Costs are presented in 2017 dollars and do not account for increases due to inflation and escalation. See Volume 1, Appendix D for cost estimate assumptions.

| Route 1 Asan Force Main Rehabilitation/Replacement | | | |
|--|---|-------|---------|
| Project Number | MP-WW-FM-03 | Basin | Hagåtña |
| Description | Replace the force main along Route 1 (shown below in green). | | |
| Justification | The force main has been exposed in this location due to erosion along the coastline. The pipe has required spot repairs in the past and a long-term solution is required. | | |
| Proposed Schedule | Begin Design: 2018 | | |
| Cost Estimate | \$2.30M | | |
| Reference Documents | WRMPU Volume 3, Section 5.2 | | |



This proposed project is subject to change. Projects will generally include an engineering study, detailed design, and field verification to refine the exact project scope and budget. Costs are presented in 2017 dollars and do not account for increases due to inflation and escalation. See Volume 1, Appendix D for cost estimate assumptions.



EXHIBIT B

CONSOLIDATED COMMISSION ON UTILITIES
Guam Power Authority | Guam Waterworks Authority
P.O. Box 2977 Hagatna, Guam 96932 | (671)649-3002 | guamccu.org

GWA RESOLUTION NO. 04-FY2021

**RELATIVE TO APPROVAL OF A CHANGE ORDER FOR A CONSTRUCTION
MANAGEMENT CONTRACT FOR PHASE II OF THE ASAN-ADELUP-HAGATNA,
ROUTE 1 SEWERLINE REHABILITATION AND REPLACEMENT PROJECT
S15-002-EPA**

WHEREAS, under 12 G.C.A. § 14105, the Consolidated Commission on Utilities (“CCU”) has plenary authority over financial, contractual, and policy matters relative to the Guam Waterworks Authority (“GWA”); and

WHEREAS, the Guam Waterworks Authority (“GWA”) is a Guam Public Corporation established and existing under the laws of Guam; and

WHEREAS, GWA has received a grant from the United States Environmental Protection Agency (“USEPA”) under the State Revolving Fund (“SRF”) program to improve the sewer collection system, which included the gravity sewer line along Route 1, from the Asan “War in the Pacific” National Historical Park to the Agana Main Pump Station; and

WHEREAS, the segments of gravity sewer line indicated is deteriorating and has experienced collapses, bellies in the sewer line, offsets, and sections of missing or badly corroded pipe, and the intent of this project is to rehabilitate, repair or replace these sections; and

WHEREAS, GWA procured construction management (CM) services through Request for Proposal No. RFP-04-ENG-2017 that included CM services for the Rt.1 Sewer Line Rehabilitation and Replacement Project from Asan to Hagatna; and

WHEREAS, due to funding limitations, the full scope of work for construction of the Rt.1 Sewer Rehabilitation and Replacement Project was divided into phases such that Phase I construction was awarded to InfraTech International LLC for Phase I, from Asan to the Asan

1 Pump Station, through Invitation for Re-Bid No. IFB-11-ENG-2017 (GWA Project No. S15-
2 002-EPA) and Phase II, from the Asan Pump Station to Adelup and toward Hagatna, was
3 recently advertised through Invitation for Bid no. IFB-06-ENG-2020 (GWA Project No. S15-
4 002-EPA); and

5
6 **WHEREAS**, GWA selected Duenas, Camacho & Associates, Inc. (DCA) for the CM
7 Services, and negotiated with DCA for Phase I in the amount of amount of Eight Hundred
8 Seventy Thousand Six Hundred Ten Dollars and Forty-One Cents (\$870,610.41); and

9
10 **WHEREAS**, by Resolution No. 30-FY2018, see Exhibit A, the CCU authorized
11 awarding the CM services contract to DCA and CM services was contracted to DCA for a
12 maximum amount of Nine Hundred Fifty-Seven Thousand Six Hundred Seventy-One Dollars
13 and Forty-Five Cents (\$957,671.45) which included Eighty-Seven Thousand Sixty-One Dollars
14 and Four Cents (\$87,061.04) for contingencies; and,

15
16 **WHEREAS**, GWA and USEPA agree that efforts to rehabilitate, repair or replace these
17 sewer lines are necessary and the proceeding order to accomplish such task is through services
18 that include construction management; and

19
20 **WHEREAS**, GWA is preparing to award a contract to the lowest responsive and
21 responsible bidder under the Phase II IFB; and,

22
23 **WHEREAS**, GWA requires CM services for Phase II construction and has negotiated a
24 fair and reasonable fee for such services from DCA under the scope of work advertised under
25 Request for Proposal No. RFP-04-ENG-2017; and,

26
27 **WHEREAS**, GWA management is requesting to amend the DCA contract to provide
28 construction management services for Phase II in the amount of Five Hundred Seventy-One
29 Thousand Five Hundred Fifty (\$571,550.00), see Exhibit B, including a contingency amount of
30 Twenty-Eight Thousand Four Hundred Fifty Dollars (\$28,450.00), for a total amount of Six
31 Hundred Thousand Dollars (\$600,000.00); and,

1 **WHEREAS**, funding for this project will be from the USEPA State Revolving Fund and,
2 if necessary, GWA Bond funds.

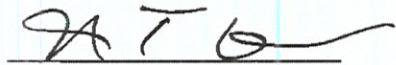
3
4 **NOW BE IT THEREFORE RESOLVED**, the Consolidated Commission on Utilities
5 does hereby approve the following:

- 6 1. The recitals set forth above hereby constitute the findings of the CCU.
7 2. The CCU finds that the terms of the fee proposal submitted by DCA are fair
8 and reasonable (See Exhibit B).
9 3. The CCU finds that the terms of the conditions set by GWA relative to
10 commencement of work activities are fair and reasonable and serve as a
11 measure of Quality Assurance/Quality Control (QA/QC).
12 4. The CCU hereby authorizes the management of GWA to execute a Change
13 Order to the contract with DCA in the amount of Six Hundred Thousand
14 Dollars (\$600,000.00).
15 5. The CCU hereby further approves the total funding for the CM contract with
16 DCA in the amount of One Million Five Hundred Fifty-Seven Thousand Six
17 Hundred and Seventy-One Dollars and Forty-Five Cents (\$1,557,671.45).
18

19 **RESOLVED**, that the Chairman certified, and the Board Secretary attests to the adoption
20 of this Resolution.

21
22 **DULY AND REGULARLY ADOPTED**, this 24th day of November 2020.
23

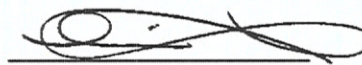
24 Certified by:

25 
26

27 **JOSEPH T. DUENAS**

28 Chairperson

24 Attested by:

25 
26

27 **MICHAEL T. LIMTIACO**

28 Secretary

29 //

30
31 //
32

1
2
3
4
5
6
7
8
9
10
11
12
13
14
15
16
17
18
19
20
21
22
23
24
25
26
27
28
29
30
31

SECRETARY'S CERTIFICATE

I, Michael T. Limtiaco, Board Secretary of the Consolidated Commission on Utilities as evidenced by my signature above do hereby certify as follows:

The foregoing is a full, true and accurate copy of the resolution duly adopted at a regular meeting by the members of the Guam Consolidated Commission on Utilities, duly and legally held at a place properly noticed and advertised at which meeting a quorum was present and the members who were present voted as follows:

| | |
|----------|----------|
| AYES: | <u>5</u> |
| NAYS: | <u>0</u> |
| ABSENT: | <u>0</u> |
| ABSTAIN: | <u>0</u> |



EXHIBIT A



CONSOLIDATED COMMISSION ON UTILITIES
Guam Power Authority | Guam Waterworks Authority
P.O. Box 2977 Hagatna, Guam 96932 | (671)649-3002 | guamccu.org

RESOLUTION NO. 30-FY2018

RELATIVE TO APPROVAL OF A CONSTRUCTION MANAGEMENT CONTRACT FOR THE ASAN-ADELUP-HAGATNA, ROUTE 1 SEWERLINE REHABILITATION AND REPLACEMENT PROJECT S15-002-EPA

WHEREAS, under 12 G.C.A. § 14105, the Consolidated Commission on Utilities (“CCU”) has plenary authority over financial, contractual, and policy matters relative to the Guam Waterworks Authority (“GWA”); and

WHEREAS, the Guam Waterworks Authority (“GWA”) is a Guam Public Corporation established, and existing under the laws of Guam; and

WHEREAS, GWA has received a grant from the United States Environmental Protection Agency (“USEPA”) under the State Revolving Fund (“SRF”) program to improve the sewer collection system, which included the gravity sewer line along Route 1, from the Asan “War in the Pacific” National Historical Park to the Agana Main Pump Station; and

WHEREAS, the segments of gravity sewer line indicated is deteriorating and has experienced collapses, bellies in the sewer line, offsets, and sections of missing or badly corroded pipe, and the intent of this project is to rehabilitate, repair or replace these sections; and

WHEREAS, GWA procured engineering design services through RFP-02-ENG-2015 that included general civil engineering, geotechnical engineering, and archeological investigation for wastewater collection system evaluation, analysis and detailed design; and

WHEREAS, the professional engineering design services have been completed by HDR Engineering, Inc. through contract, which was signed on December 10, 2015, and all rendered design documents have been accepted by GWA in May 2017; and

1
2 **WHEREAS**, GWA and USEPA agree that efforts to rehabilitate, repair or replace these
3 sewer lines are necessary and the proceeding order to accomplish such task is through services
4 that include construction management; and

5
6 **WHEREAS**, GWA has advertised the Request for Proposal (RFP-04-ENG-2017) dated
7 March 30, 2017, soliciting statement of qualifications from experienced and qualified
8 engineering firms to provide construction management services for the ASAN-ADELUP-
9 HAGATNA, ROUTE 1 SEWERLINE REHABILITATION AND REPLACEMENT PROJECT;
10 and

11
12 **WHEREAS**, RFP packages were downloaded by multiple interested parties, from which
13 GWA received proposal submittal from eight (8) engineering firms before the RFP submittal
14 deadline; and

15
16 **WHEREAS**, the GWA A-E Selection Committee reviewed and evaluated the eight (8)
17 proposals (see EXHIBIT A-Evaluation Score) and generated a short list of the top three (3) firms
18 with a recommendation to award a contract to the firm DUENAS, CAMACHO &
19 ASSOCIATES, INC. ("DCA") and any successor at interest thereto (see EXHIBIT B- GM
20 Determination); and

21
22 **WHEREAS**, GWA advertised the initial Invitation to Bid (IFB-06-ENG-2017) for the
23 construction of this project on May 12, 2017, and received no responsive and responsible
24 bidders; and

25
26 **WHEREAS**, GWA advertised a second time, with the Invitation to Re-Bid (IFB-11-
27 ENG-2017) on October 31, 2017, and again received no responsive and responsible bidders; and

28
29 **WHEREAS**, Following the second attempt, GWA revised the bid documents and Bid
30 Form to include two separate, independent Bid Schedules, Bid Schedule A and Bid Schedule B,
31 with Bid Schedule A being primarily repairs by Cured-In-Place-Pipe installation, and Bid
32 Schedule B being repairs entirely by Open Cut and Replacement; and

1
2 **WHEREAS**, GWA advertised the next Invitation to Re-Bid (IFB-05-ENG-2018) on May
3 4, 2018, with the two revised Bid Schedules; and
4

5 **WHEREAS**, Bid Schedule A will be opened first, and if bids should be opened and
6 found to be responsive and responsible, the lowest responsive and responsible bid will be
7 selected; and
8

9 **WHEREAS**, if no Contractors submit for Bid Schedule A, Bid Schedule B will then be
10 opened, and the lowest responsive and responsible bid will be selected from Bid Schedule B; and
11

12 **WHEREAS**, DCA and GWA negotiated the price for the construction management
13 services to be provided if either Bid Schedule A or Bid Schedule B is selected; and
14

15 **WHEREAS**, If Bid Schedule A is selected, the construction management services with
16 DCA will be in the amount of Six Hundred Eighty-Three Thousand Nine Hundred Thirty-One
17 Dollars and Thirty-Four Cents (\$683,931.34) on a Time and Materials basis (See EXHIBIT C –
18 Fee Proposal); and
19

20 **WHEREAS**, If Bid Schedule B is selected, the construction management services with
21 DCA will be in the amount of Eight Hundred Seventy Thousand Six Hundred Ten Dollars and
22 Forty-One Cents (\$870,610.41) on a Time and Materials basis (See EXHIBIT C – Fee Proposal);
23 and
24

25 **WHEREAS**, GWA Management seeks approval of the fee proposal for the Scope of
26 Work relative to the construction Bid Schedule B, which includes construction management,
27 inspection, and project coordination services during construction of Eight Hundred Seventy
28 Thousand Six Hundred Ten Dollars and Forty-One Cents (\$870,610.41), plus a ten percent
29 (10%) contingency of Eighty-Seven Thousand Sixty-One Dollars and Four Cents (\$87,061.04),
30 for a total amount of Nine Hundred Fifty-Seven Thousand Six Hundred Seventy-One Dollars
31 and Forty-Five Cents (\$957,671.45); and
32

1 **WHEREAS**, funding for this project will be from the USEPA State Revolving Fund and,
2 if necessary, GWA Bond funds applicable to the project; and

3
4 **NOW BE IT THEREFORE RESOLVED**, the Consolidated Commission on Utilities
5 does hereby approve the following:

- 6 1. The recitals set forth above hereby constitute the findings of the CCU.
7 2. The CCU finds that the terms of the fee proposal submitted by Duenas, Camacho
8 & Associates, Inc. (DCA) are fair and reasonable.
9 3. The CCU finds that the terms of the conditions set by GWA relative to
10 commencement of work activities are fair and reasonable and serve as a measure
11 of Quality Assurance/Quality Control (QA/QC).
12 4. The CCU hereby authorizes the management of GWA to enter into a contract
13 with DCA in the amount of Eight Hundred Seventy Thousand Six Hundred Ten
14 Dollars and Forty-One Cents (\$870,610.41) (EXHIBIT C).
15 5. The CCU hereby further approves the total funding amount for this project of
16 Eight Hundred Seventy Thousand Six Hundred Ten Dollars and Forty-One Cents
17 (\$870,610.41), plus a ten percent (10%) contingency of Eighty-Seven Thousand
18 Sixty-One Dollars and Four Cents (\$87,061.04), to bring the total authorized
19 funding amount to a maximum of Nine Hundred Fifty-Seven Thousand Six
20 Hundred Seventy-One Dollars and Forty-Five Cents (\$957,671.45).

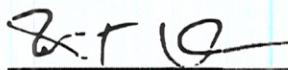
21 **RESOLVED**, that the Chairman certified and the Board Secretary attests to the adoption
22 of this Resolution.

23 //

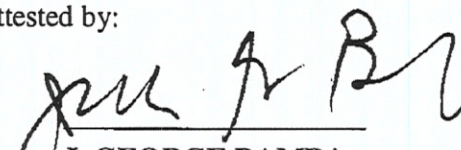
24
25 //

26 **DULY AND REGULARLY ADOPTED**, this 22nd day of May 2018.

27
28 Certified by:

29 
30 _____
31 **JOSEPH T. DUENAS**
32 Chairperson

Attested by:



 J. GEORGE BAMBA
 Secretary

1
2
3
4
5
6
7
8
9
10
11
12
13
14
15
16
17
18
19
20
21
22
23
24
25
26
27
28
29
30
31
32

SECRETARY'S CERTIFICATE

I, J. George Bamba, Board Secretary of the Consolidated Commission on Utilities as evidenced by my signature above do hereby certify as follows:

The foregoing is a full, true and accurate copy of the resolution duly adopted at a regular meeting by the members of the Guam Consolidated Commission on Utilities, duly and legally held at a place properly noticed and advertised at which meeting a quorum was present and the members who were present voted as follows:

AYES:

4

NAYS:

0

ABSTENTIONS:

0

ABSENT:

1



///

///

///

///

Exhibit A (1 of 2)

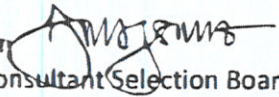


GUAM WATERWORKS AUTHORITY

Gloria B. Nelson Public Service Building • 688 Route 15 • Mangilao, Guam 96913

May 19, 2017

To: Thomas F. Cruz, P.E., Chief Engineer

From: Gloria P. Bensan 
Chairperson, Consultant Selection Board

Subject: RFP-04-ENG-2017
Construction Management Services for the Asan-Adelup-Hagatna, Route 1
Sewerline Rehabilitation and Replacement
GWA Project No. S15-002-EPA

The following information is intended to document the evaluation process undertaken for the referenced solicitation.

| EVALUATION COMMITTEE MEMBERS | |
|------------------------------|-----------------------|
| Name | Title |
| Clinton Huntington II | Senior Engineer |
| Rylma Carino | Junior Engineer |
| Anthony Chargualaf | Operations Manager |
| George Watson | Brown & Caldwell, PMO |

| Consultant | Evaluation Score | | | | Total | Rank |
|-----------------------------------|------------------|----|----|----|-------|------|
| 1. AmOrient | 85 | 89 | 81 | 75 | 330 | 4 |
| 2. EMPSCO Engineering Consultants | 62 | 90 | 86 | 86 | 324 | 5 |
| 3. LYON | 80 | 85 | 80 | 70 | 315 | 7 |
| 4. E.M. Chen & Associates, Inc. | 77 | 88 | 81 | 70 | 316 | 6 |
| 5. Duenas, Camacho & Associates | 82 | 92 | 92 | 90 | 356 | 1 |
| 6. TG Engineers, PC | 83 | 91 | 90 | 85 | 349 | 2 |
| 7. Coeval Design Partners | 70 | 84 | 74 | 66 | 294 | 8 |
| 8. AECOM | 75 | 89 | 86 | 89 | 339 | 3 |

Scores were evaluated based on sum of the individual scores. The recommendation of the evaluation committee is shown in the ranking above.

Please review and approve at your earliest convenience so that we may proceed with the notification letters.

Exhibit A (2 of 2)

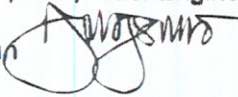


GUAM WATERWORKS AUTHORITY

"Better Water. Better Lives."

Gloria B. Nelson Public Service Building
688 Route 15, Mangilao, Guam 96913

MEMORANDUM

TO: Thomas F. Cruz, P.E., Chief Engineer
FROM: Gloria P. Bensen 
SUBJECT: CM Selection
DATE: May 18, 2017

Per our discussion with the General Manager and Legal Counsel on May 15, 2017, the CM selection team reconvened on May 16, 2017 at 2:30 pm to discuss the merits of evaluation for each proposal submitted for the following projects:

1. Asan-Adelup-Hagatna, Route 1 Sewerline Rehabilitation and Replacement
2. Route 2 War in the Pacific National Park Sewerline Rehabilitation and Replacement

Each selection committee reviewed the RFP proposals and reevaluated them based on the predetermined set of criteria. Committee members obtained reasonable, rational and consistent basis for their scores in comparison to the evaluation criteria outlined in the solicitation documents and determined the final ranking of proposers as shown in the attached evaluation summary.


Exhibit B (1 of 1)

GUAM WATERWORKS AUTHORITY

"Better Water. Better Lives."
Gloria B. Nelson Public Service Building
688 Route 15, Mangilao, Guam 96913

MEMORANDUM

To: Miguel C. Bordallo, P.E., General Manager

From: Thomas F. Cruz, P.E., Chief Engineer 

Subject: RFP-04-ENG-2017
Construction Management Services for the Asan-Adelup-Hagatna, Route 1
Sewerline Rehabilitation and Replacement
GWA Project No. S15-002-EPA

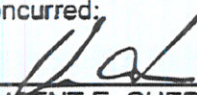
Date: May 19, 2017

The Selection Committee has completed all necessary actions for selecting the most qualified consultant for the referenced solicitation. All proposals were reviewed and scored according to the conditions established in the solicitation. The evaluation summary sheet is attached for your information.

The committee recommends the following top three (3) firms in order of preference for the project:

1. Duenas, Camacho & Associates
2. TG Engineers, PC
3. AECOM

Concurred:


VINCENT E. GUERRERO
Supply Management Administrator

5/22/2017
Date

GENERAL MANAGER'S DETERMINATION

Consultant Firm Selected:

DUEÑAS CAMACHO & ASOC.

Remarks:


MIGUEL C. BORDALLO, P.E.
General Manager

5.23.17
Date



Exhibit C (1 of 9)

Website: www.dcaguam.com
Email: dca@dcaguam.com

April 23, 2018

Guam Waterworks Authority
Engineering Division, Room 202
Gloria B. Nelson Public Service Building
688 Route 15, Mangilao, GU 96913

Attention: **Mr. Thomas F. Cruz, Chief Engineer, GWA / George Watson, Brown & Caldwell**

Subject: **GWA RFP-04-ENG--2017, Construction Management Services for Asan-Adelup-Hagatna Route 1 Sewerline Rehabilitation and Replacement, GWA Project No. S15-002-EPA**

Re: *Revised Fee Proposal Related to Bid Schedules A and B*

Hafa Adai:

Duenas, Camacho & Associates, Inc. is pleased to submit this *revised* fee proposal for **GWA RFP-04-ENG-2017, Construction Management Services for Asan-Adelup-Hagatna Route 1 Sewerline Rehabilitation and Replacement, GWA Project No. S15-002-EPA**. The revisions and updates include the following:

1. Fee estimates for:
 - a. CM Services under Base Bid Schedule A – CIPP Rehabilitation of Existing Sewer Lines
Revised Fee Estimate: \$683,931.34 including a \$10,000 Time & Material allowance for Material Testing
 - b. ~~CM Services under Base Bid Schedule B – Cut and Cover Construction of New Sewer Lines~~
~~Fee Estimate: \$654,143.21 including a \$20,000 Time & Material allowance for Material Testing~~
Revised estimate for Bid Schedule B attached.
2. 2018 (current) DCA Personnel Labor and OH Rates
3. A GRT Tax Rate of 5% (recently enacted into law)

Our revised fee estimates for construction management services for each Bid Schedule are supported by the following:

- Detailed Fee Breakdown showing an estimate of effort and expenses
- Exhibit A – Estimated expenses for DCA and CH2M submitted earlier (no change)
- Deletion of Secure Safe Solutions for video surveillance (as requested by GWA)

As indicated in our Proposal submitted in response to the subject RFP, DCA will retain CH2M (our CM Team CIPP Specialist) if a Construction Contract is awarded under Base Bid Schedule A – CIPP Rehabilitation of Existing Sewer Lines. Geo-Engineering & Testing Inc. will provide geotechnical consultation and quality assurance material testing services. The cost for video surveillance by Secure Safe Solutions has been removed at GWA's request.

The estimate of CM effort is based on the following assumptions:

1. The Scope of CM services and tasks as described in the RFP;
2. Base Bid Schedules A and B as described in the amended Bid Form provided to DCA;
3. Project construction duration of 450 calendar days;
4. Full-time resident inspection and supplementary inspection (25% of resident inspection effort for CM Services under Base Bid Schedule A and 50% of resident inspection effort for CM services under Base Bid Schedule B);

Exhibit C (2 of 9)

April 23, 2018

5. Part-time CM support by our CIPP Specialist from CH2M under Base Bid Schedule A;
6. Current (2018) DCA personnel rates (loaded).

We look forward to negotiations.

Sincerely,

//Signed

JOHN P. DUENAS, P.E.

President

Enclosures

Exhibit C (3 of 9)

Consolidated Fee Estimate

EXHIBIT A - BASE BID SCHEDULE A DCA EXPENSES

| DUENAS, CAMACHO & ASSOCIATES, INC | | | | CONSTRUCTION | |
|---|--------------------------------|-----|-------|---------------------|--------------------|
| MANAGEMENT SERVICES FOR ASAN-ADELUP-HAGATNA ROUTE 1 SEWERLINE | | | | REHABILITATION AND | |
| CM Inspection Related Expenses | | | | Unit | Cost |
| 1 | Miscellaneous Expenses | LS | | | \$ 500.00 |
| 2 | Mileage (Inspection) | mi | 3200 | \$ 0.33 | \$ 1,161.60 |
| 3 | Mileage (miscellaneous) | mi | 2800 | \$ 0.33 | \$ 1,016.40 |
| 4 | Pictures, video, etc. | LS | | | \$ 250.00 |
| 5 | Reproduction | LS | | | \$ 3,500.00 |
| 6 | Communications, etc. | LS | | | \$ 500.00 |
| 7 | Miscellaneous Survey Materials | LS | | | \$ 250.00 |
| | | GRT | 5.25% | | \$ 376.85 |
| | | | | DCA EXPENSES | \$ 7,554.85 |

CH2M EXPENSES

| CH2M | | | | CONSTRUCTION | |
|---|--|------|----|----------------------|---------------------|
| MANAGEMENT SERVICES FOR ASAN-ADELUP-HAGATNA ROUTE 1 SEWERLINE | | | | REHABILITATION AND | |
| REPLACEMENT, GWA PROJECT NO. S15-002-EPA | | | | | |
| | | | | Unit | Cost |
| 1 | Travel expenses for CH2M CIPPSpec Site Visit | | 3 | \$ 3,000.00 | \$ 9,000.00 |
| 2 | Lodging (28 days total) | Days | 28 | \$ 215.00 | \$ 6,622.00 |
| 3 | Meals | Days | 28 | \$ 75.00 | \$ 2,310.00 |
| 4 | Rental Car | Days | 28 | \$ 50.00 | \$ 1,540.00 |
| 5 | Misc. Expenses | Trip | 3 | \$ 100.00 | \$ 330.00 |
| Subtotal | | | | | \$ 19,802.00 |
| | | | | CH2M EXPENSES | \$ 19,802.00 |

Exhibit C (4 of 9)

| QUAKE WATERWORKS AUTHORITY CONSTRUCTION MANAGEMENT SERVICES FOR SAN JOSE AVENUE ROUTE 1 SEWER LINE REHABILITATION AND REPLACEMENT, GWA PROJECT NO. 515-003-0PM | | | | | | | | | | | | | | | | | | | | | | | | | |
|--|---|---------------------|----------------------|------------------------------|---------------------------------|---------------------------------------|------------------------------|------------------------------|--------------------------------------|------------------------------|-------------|-------------|----------------|-------------------------|--------|----------------------------------|-----------------------------------|-----------------------------------|--------|-------------------------------------|----------------|--------------------------|-------|--|--|
| Deenon, Camacho & Associates, Inc. (DCA) | | | | | | | | | | | | | | | | | | | | | | | | | |
| CH2M | | | | | | | | | | | | | | | | | | | | | | | | | |
| Geo-Engineering & Testing (CM Support) | | | | | | | | | | | | | | | | | | | | | | | | | |
| SCHEDULE A - BASE BID: CIPP | | | | | | | | | | | | | | | | | | | | | | | | | |
| Task No. | Task Description | Principal in Charge | Construction Manager | Project Construction Manager | Resident Construction Inspector | Construction Inspector (Supplemental) | Chief Engineer (CM Engineer) | Staff Engineer (CM Engineer) | Engineering Technician (CM Engineer) | Chief Construction Scientist | J-Main Crew | J-Main Crew | Chief Surveyor | Subcontractor Admin/Est | TOTALS | CM/Project Manager (CM Engineer) | CM/Project Engineer (CM Engineer) | CM/Project Engineer (CM Engineer) | TOTALS | Subcontractor Construction Engineer | Staff Engineer | Administrative Assistant | TOTAL | | |
| Location: 2019 DCA Logo Status: Active | | | | | | | | | | | | | | | | | | | | | | | | | |
| CM SERVICES - TOTALS | | | | | | | | | | | | | | | | | | | | | | | | | |
| CONSTRUCTION MANAGEMENT SERVICES | | | | | | | | | | | | | | | | | | | | | | | | | |
| A. General Construction Management Tasks | | | | | | | | | | | | | | | | | | | | | | | | | |
| 1 | Project Coordination | 0 | 0 | 0 | 0 | 0 | 0 | 0 | 0 | 0 | 0 | 0 | 0 | 0 | 0 | 0 | 0 | 0 | 0 | 0 | 0 | 0 | 0 | | |
| 2 | Project Correspondence | 0 | 0 | 0 | 0 | 0 | 0 | 0 | 0 | 0 | 0 | 0 | 0 | 0 | 0 | 0 | 0 | 0 | 0 | 0 | 0 | 0 | 0 | | |
| 3 | Daily Construction Log | 0 | 0 | 0 | 0 | 0 | 0 | 0 | 0 | 0 | 0 | 0 | 0 | 0 | 0 | 0 | 0 | 0 | 0 | 0 | 0 | 0 | 0 | | |
| 4 | Weekly Status Report | 0 | 0 | 0 | 0 | 0 | 0 | 0 | 0 | 0 | 0 | 0 | 0 | 0 | 0 | 0 | 0 | 0 | 0 | 0 | 0 | 0 | 0 | | |
| 5 | Admin. and Training Coord. | 0 | 0 | 0 | 0 | 0 | 0 | 0 | 0 | 0 | 0 | 0 | 0 | 0 | 0 | 0 | 0 | 0 | 0 | 0 | 0 | 0 | 0 | | |
| 6 | Material & Processing of Payment Requests | 0 | 0 | 0 | 0 | 0 | 0 | 0 | 0 | 0 | 0 | 0 | 0 | 0 | 0 | 0 | 0 | 0 | 0 | 0 | 0 | 0 | 0 | | |
| 7 | Conduct Project Meetings | 0 | 0 | 0 | 0 | 0 | 0 | 0 | 0 | 0 | 0 | 0 | 0 | 0 | 0 | 0 | 0 | 0 | 0 | 0 | 0 | 0 | 0 | | |
| 8 | Procurement on Construction | 0 | 0 | 0 | 0 | 0 | 0 | 0 | 0 | 0 | 0 | 0 | 0 | 0 | 0 | 0 | 0 | 0 | 0 | 0 | 0 | 0 | 0 | | |
| 9 | Progress Overlaid | 0 | 0 | 0 | 0 | 0 | 0 | 0 | 0 | 0 | 0 | 0 | 0 | 0 | 0 | 0 | 0 | 0 | 0 | 0 | 0 | 0 | 0 | | |
| 10 | Other Meetings | 0 | 0 | 0 | 0 | 0 | 0 | 0 | 0 | 0 | 0 | 0 | 0 | 0 | 0 | 0 | 0 | 0 | 0 | 0 | 0 | 0 | 0 | | |
| 11 | Project Construction | 0 | 0 | 0 | 0 | 0 | 0 | 0 | 0 | 0 | 0 | 0 | 0 | 0 | 0 | 0 | 0 | 0 | 0 | 0 | 0 | 0 | 0 | | |
| 12 | Requests for Information | 0 | 0 | 0 | 0 | 0 | 0 | 0 | 0 | 0 | 0 | 0 | 0 | 0 | 0 | 0 | 0 | 0 | 0 | 0 | 0 | 0 | 0 | | |
| 13 | General Construction Administration | 0 | 0 | 0 | 0 | 0 | 0 | 0 | 0 | 0 | 0 | 0 | 0 | 0 | 0 | 0 | 0 | 0 | 0 | 0 | 0 | 0 | 0 | | |
| 14 | Subcontractor Coordination | 0 | 0 | 0 | 0 | 0 | 0 | 0 | 0 | 0 | 0 | 0 | 0 | 0 | 0 | 0 | 0 | 0 | 0 | 0 | 0 | 0 | 0 | | |
| 15 | Subcontractor Coordination | 0 | 0 | 0 | 0 | 0 | 0 | 0 | 0 | 0 | 0 | 0 | 0 | 0 | 0 | 0 | 0 | 0 | 0 | 0 | 0 | 0 | 0 | | |
| 16 | Subcontractor Coordination | 0 | 0 | 0 | 0 | 0 | 0 | 0 | 0 | 0 | 0 | 0 | 0 | 0 | 0 | 0 | 0 | 0 | 0 | 0 | 0 | 0 | 0 | | |
| 17 | Subcontractor Coordination | 0 | 0 | 0 | 0 | 0 | 0 | 0 | 0 | 0 | 0 | 0 | 0 | 0 | 0 | 0 | 0 | 0 | 0 | 0 | 0 | 0 | 0 | | |
| 18 | Subcontractor Coordination | 0 | 0 | 0 | 0 | 0 | 0 | 0 | 0 | 0 | 0 | 0 | 0 | 0 | 0 | 0 | 0 | 0 | 0 | 0 | 0 | 0 | 0 | | |
| 19 | Subcontractor Coordination | 0 | 0 | 0 | 0 | 0 | 0 | 0 | 0 | 0 | 0 | 0 | 0 | 0 | 0 | 0 | 0 | 0 | 0 | 0 | 0 | 0 | 0 | | |
| 20 | Subcontractor Coordination | 0 | 0 | 0 | 0 | 0 | 0 | 0 | 0 | 0 | 0 | 0 | 0 | 0 | 0 | 0 | 0 | 0 | 0 | 0 | 0 | 0 | 0 | | |
| 21 | Subcontractor Coordination | 0 | 0 | 0 | 0 | 0 | 0 | 0 | 0 | 0 | 0 | 0 | 0 | 0 | 0 | 0 | 0 | 0 | 0 | 0 | 0 | 0 | 0 | | |
| 22 | Subcontractor Coordination | 0 | 0 | 0 | 0 | 0 | 0 | 0 | 0 | 0 | 0 | 0 | 0 | 0 | 0 | 0 | 0 | 0 | 0 | 0 | 0 | 0 | 0 | | |
| 23 | Subcontractor Coordination | 0 | 0 | 0 | 0 | 0 | 0 | 0 | 0 | 0 | 0 | 0 | 0 | 0 | 0 | 0 | 0 | 0 | 0 | 0 | 0 | 0 | 0 | | |
| 24 | Subcontractor Coordination | 0 | 0 | 0 | 0 | 0 | 0 | 0 | 0 | 0 | 0 | 0 | 0 | 0 | 0 | 0 | 0 | 0 | 0 | 0 | 0 | 0 | 0 | | |
| 25 | Subcontractor Coordination | 0 | 0 | 0 | 0 | 0 | 0 | 0 | 0 | 0 | 0 | 0 | 0 | 0 | 0 | 0 | 0 | 0 | 0 | 0 | 0 | 0 | 0 | | |
| 26 | Subcontractor Coordination | 0 | 0 | 0 | 0 | 0 | 0 | 0 | 0 | 0 | 0 | 0 | 0 | 0 | 0 | 0 | 0 | 0 | 0 | 0 | 0 | 0 | 0 | | |
| 27 | Subcontractor Coordination | 0 | 0 | 0 | 0 | 0 | 0 | 0 | 0 | 0 | 0 | 0 | 0 | 0 | 0 | 0 | 0 | 0 | 0 | 0 | 0 | 0 | 0 | | |
| 28 | Subcontractor Coordination | 0 | 0 | 0 | 0 | 0 | 0 | 0 | 0 | 0 | 0 | 0 | 0 | 0 | 0 | 0 | 0 | 0 | 0 | 0 | 0 | 0 | 0 | | |
| 29 | Subcontractor Coordination | 0 | 0 | 0 | 0 | 0 | 0 | 0 | 0 | 0 | 0 | 0 | 0 | 0 | 0 | 0 | 0 | 0 | 0 | 0 | 0 | 0 | 0 | | |
| 30 | Subcontractor Coordination | 0 | 0 | 0 | 0 | 0 | 0 | 0 | 0 | 0 | 0 | 0 | 0 | 0 | 0 | 0 | 0 | 0 | 0 | 0 | 0 | 0 | 0 | | |
| 31 | Subcontractor Coordination | 0 | 0 | 0 | 0 | 0 | 0 | 0 | 0 | 0 | 0 | 0 | 0 | 0 | 0 | 0 | 0 | 0 | 0 | 0 | 0 | 0 | 0 | | |
| 32 | Subcontractor Coordination | 0 | 0 | 0 | 0 | 0 | 0 | 0 | 0 | 0 | 0 | 0 | 0 | 0 | 0 | 0 | 0 | 0 | 0 | 0 | 0 | 0 | 0 | | |
| 33 | Subcontractor Coordination | 0 | 0 | 0 | 0 | 0 | 0 | 0 | 0 | 0 | 0 | 0 | 0 | 0 | 0 | 0 | 0 | 0 | 0 | 0 | 0 | 0 | 0 | | |
| 34 | Subcontractor Coordination | 0 | 0 | 0 | 0 | 0 | 0 | 0 | 0 | 0 | 0 | 0 | 0 | 0 | 0 | 0 | 0 | 0 | 0 | 0 | 0 | 0 | 0 | | |
| 35 | Subcontractor Coordination | 0 | 0 | 0 | 0 | 0 | 0 | 0 | 0 | 0 | 0 | 0 | 0 | 0 | 0 | 0 | 0 | 0 | 0 | 0 | 0 | 0 | 0 | | |
| 36 | Subcontractor Coordination | 0 | 0 | 0 | 0 | 0 | 0 | 0 | 0 | 0 | 0 | 0 | 0 | 0 | 0 | 0 | 0 | 0 | 0 | 0 | 0 | 0 | 0 | | |
| 37 | Subcontractor Coordination | 0 | 0 | 0 | 0 | 0 | 0 | 0 | 0 | 0 | 0 | 0 | 0 | 0 | 0 | 0 | 0 | 0 | 0 | 0 | 0 | 0 | 0 | | |
| 38 | Subcontractor Coordination | 0 | 0 | 0 | 0 | 0 | 0 | 0 | 0 | 0 | 0 | 0 | 0 | 0 | 0 | 0 | 0 | 0 | 0 | 0 | 0 | 0 | 0 | | |
| 39 | Subcontractor Coordination | 0 | 0 | 0 | 0 | 0 | 0 | 0 | 0 | 0 | 0 | 0 | 0 | 0 | 0 | 0 | 0 | 0 | 0 | 0 | 0 | 0 | 0 | | |
| 40 | Subcontractor Coordination | 0 | 0 | 0 | 0 | 0 | 0 | 0 | 0 | 0 | 0 | 0 | 0 | 0 | 0 | 0 | 0 | 0 | 0 | 0 | 0 | 0 | 0 | | |
| 41 | Subcontractor Coordination | 0 | 0 | 0 | 0 | 0 | 0 | 0 | 0 | 0 | 0 | 0 | 0 | 0 | 0 | 0 | 0 | 0 | 0 | 0 | 0 | 0 | 0 | | |
| 42 | Subcontractor Coordination | 0 | 0 | 0 | 0 | 0 | 0 | 0 | 0 | 0 | 0 | 0 | 0 | 0 | 0 | 0 | 0 | 0 | 0 | 0 | 0 | 0 | 0 | | |
| 43 | Subcontractor Coordination | 0 | 0 | 0 | 0 | 0 | 0 | 0 | 0 | 0 | 0 | 0 | 0 | 0 | 0 | 0 | 0 | 0 | 0 | 0 | 0 | 0 | 0 | | |
| 44 | Subcontractor Coordination | 0 | 0 | 0 | 0 | 0 | 0 | 0 | 0 | 0 | 0 | 0 | 0 | 0 | 0 | 0 | 0 | 0 | 0 | 0 | 0 | 0 | 0 | | |
| 45 | Subcontractor Coordination | 0 | 0 | 0 | 0 | 0 | 0 | 0 | 0 | 0 | 0 | 0 | 0 | 0 | 0 | 0 | 0 | 0 | 0 | 0 | 0 | 0 | 0 | | |
| 46 | Subcontractor Coordination | 0 | 0 | 0 | 0 | 0 | 0 | 0 | 0 | 0 | 0 | 0 | 0 | 0 | 0 | 0 | 0 | 0 | 0 | 0 | 0 | 0 | 0 | | |
| 47 | Subcontractor Coordination | 0 | 0 | 0 | 0 | 0 | 0 | 0 | 0 | 0 | 0 | 0 | 0 | 0 | 0 | 0 | 0 | 0 | 0 | 0 | 0 | 0 | 0 | | |
| 48 | Subcontractor Coordination | 0 | 0 | 0 | 0 | 0 | 0 | 0 | 0 | 0 | 0 | 0 | 0 | 0 | 0 | 0 | 0 | 0 | 0 | 0 | 0 | 0 | 0 | | |
| 49 | Subcontractor Coordination | 0 | 0 | 0 | 0 | 0 | 0 | 0 | 0 | 0 | 0 | 0 | 0 | 0 | 0 | 0 | 0 | 0 | 0 | 0 | 0 | 0 | 0 | | |
| 50 | Subcontractor Coordination | 0 | 0 | 0 | 0 | 0 | 0 | 0 | 0 | 0 | 0 | 0 | 0 | 0 | 0 | 0 | 0 | 0 | 0 | 0 | 0 | 0 | 0 | | |
| 51 | Subcontractor Coordination | 0 | 0 | 0 | 0 | 0 | 0 | 0 | 0 | 0 | 0 | 0 | 0 | 0 | 0 | 0 | 0 | 0 | 0 | 0 | 0 | 0 | 0 | | |
| 52 | Subcontractor Coordination | 0 | 0 | 0 | 0 | 0 | 0 | 0 | 0 | 0 | 0 | 0 | 0 | 0 | 0 | 0 | 0 | 0 | 0 | 0 | 0 | 0 | 0 | | |
| 53 | Subcontractor Coordination | 0 | 0 | 0 | 0 | 0 | 0 | 0 | 0 | 0 | 0 | 0 | 0 | 0 | 0 | 0 | 0 | 0 | 0 | 0 | 0 | 0 | 0 | | |
| 54 | Subcontractor Coordination | 0 | 0 | 0 | 0 | 0 | 0 | 0 | 0 | 0 | 0 | 0 | 0 | 0 | 0 | 0 | 0 | 0 | 0 | 0 | 0 | 0 | 0 | | |
| 55 | Subcontractor Coordination | 0 | 0 | 0 | 0 | 0 | 0 | 0 | 0 | 0 | 0 | 0 | 0 | 0 | 0 | 0 | 0 | 0 | 0 | 0 | 0 | 0 | 0 | | |
| 56 | Subcontractor Coordination | 0 | 0 | 0 | 0 | 0 | 0 | 0 | 0 | 0 | 0 | 0 | 0 | 0 | 0 | 0 | 0 | 0 | 0 | 0 | 0 | 0 | 0 | | |
| 57 | Subcontractor Coordination | 0 | 0 | 0 | 0 | 0 | 0 | 0 | 0 | 0 | 0 | 0 | 0 | 0 | 0 | 0 | 0 | 0 | 0 | 0 | 0 | 0 | 0 | | |
| 58 | Subcontractor Coordination | 0 | 0 | 0 | 0 | 0 | 0 | 0 | 0 | 0 | 0 | 0 | 0 | 0 | 0 | 0 | 0 | 0 | 0 | 0 | 0 | 0 | 0 | | |
| 59 | Subcontractor Coordination | 0 | 0 | 0 | 0 | 0 | 0 | 0 | 0 | 0 | 0 | 0 | 0 | 0 | 0 | 0 | 0 | 0 | 0 | 0 | 0 | 0 | 0 | | |
| 60 | Subcontractor Coordination | 0 | 0 | 0 | 0 | 0 | 0 | 0 | 0 | 0 | 0 | 0 | 0 | 0 | 0 | 0 | 0 | 0 | 0 | 0 | 0 | 0 | 0 | | |
| 61 | Subcontractor Coordination | 0 | 0 | 0 | 0 | 0 | 0 | 0 | 0 | 0 | 0 | 0 | 0 | 0 | 0 | 0 | 0 | 0 | 0 | 0 | 0 | 0 | 0 | | |
| 62 | Subcontractor Coordination | 0 | 0 | 0 | 0 | 0 | 0 | 0 | 0 | 0 | 0 | 0 | 0 | 0 | 0 | 0 | 0 | 0 | 0 | 0 | 0 | 0 | 0 | | |
| 63 | Subcontractor Coordination | 0 | 0 | 0 | 0 | 0 | 0 | 0 | 0 | 0 | 0 | 0 | 0 | 0 | 0 | 0 | 0 | 0 | 0 | 0 | 0 | 0 | 0 | | |
| 64 | Subcontractor Coordination | 0 | 0 | 0 | 0 | 0 | 0 | 0 | 0 | 0 | 0 | 0 | 0 | 0 | 0 | 0 | 0 | 0 | 0 | 0 | 0 | 0 | 0 | | |
| 65 | Subcontractor Coordination | 0 | 0 | 0 | 0 | 0 | 0 | 0 | 0 | 0 | 0 | 0 | 0 | 0 | 0 | 0 | 0 | 0 | 0 | 0 | 0 | 0 | 0 | | |
| 66 | Subcontractor Coordination | 0 | 0 | 0 | 0 | 0 | 0 | 0 | 0 | 0 | 0 | 0 | 0 | 0 | 0 | 0 | 0 | 0 | 0 | 0 | 0 | 0 | 0 | | |
| 67 | Subcontractor Coordination | 0 | 0 | 0 | 0 | 0 | 0 | 0 | 0 | 0 | 0 | 0 | 0 | 0 | 0 | 0 | 0 | 0 | 0 | 0 | 0 | 0 | 0 | | |
| 68 | Subcontractor Coordination | 0 | 0 | 0 | 0 | 0 | 0 | 0 | 0 | 0 | 0 | 0 | 0 | 0 | 0 | 0 | 0 | 0 | 0 | 0 | 0 | 0 | 0 | | |
| 69 | Subcontractor Coordination | 0 | 0 | 0 | 0 | 0 | 0 | 0 | 0 | 0 | 0 | 0 | 0 | 0 | 0 | 0 | 0 | 0 | 0 | 0 | 0 | 0 | 0 | | |
| 70 | Subcontractor Coordination | 0 | 0 | 0 | 0 | 0 | 0 | 0 | 0 | 0 | 0 | 0 | 0 | 0 | 0 | 0 | 0 | 0 | 0 | 0 | 0 | 0 | 0 | | |
| 71 | Subcontractor Coordination | 0 | 0 | 0 | 0 | 0 | 0 | 0 | 0 | 0 | 0 | 0 | 0 | 0 | 0 | 0 | 0 | 0 | 0 | 0 | 0 | 0 | 0 | | |
| 72 | Subcontractor Coordination | 0 | 0 | 0 | 0 | 0 | 0 | 0 | 0 | 0 | 0 | 0 | 0 | 0 | 0 | 0 | 0 | 0 | 0 | 0 | 0 | 0 | 0 | | |
| 73 | Subcontractor Coordination | 0 | 0 | 0 | 0 | 0 | 0 | 0 | 0 | 0 | 0 | 0 | 0 | 0 | 0 | 0 | 0 | 0 | 0 | 0 | 0 | 0 | 0 | | |
| 74 | Subcontractor Coordination | 0 | 0 | 0 | 0 | 0 | 0 | 0 | 0 | 0 | 0 | 0 | 0 | 0 | 0 | 0 | 0 | 0 | 0 | 0 | 0 | 0 | 0 | | |
| 75 | Subcontractor Coordination | 0 | 0 | 0 | 0 | 0 | 0 | 0 | 0 | 0 | 0 | 0 | 0 | 0 | 0 | 0 | 0 | 0 | 0 | 0 | 0 | 0 | 0 | | |
| 76 | Subcontractor Coordination | 0 | 0 | 0 | 0 | 0 | 0 | 0 | 0 | 0 | 0 | 0 | 0 | 0 | 0 | 0 | 0 | 0 | 0 | 0 | 0 | 0 | 0 | | |
| 77 | Subcontractor Coordination | 0 | 0 | 0 | 0 | 0 | 0 | 0 | 0 | 0 | 0 | 0 | 0 | 0 | 0 | 0 | 0 | 0 | 0 | 0 | 0 | 0 | 0 | | |
| 78 | Subcontractor Coordination | 0 | 0 | 0 | 0 | 0 | 0 | 0 | 0 | 0 | 0 | 0 | 0 | 0 | 0 | 0 | 0 | 0 | 0 | 0 | 0 | 0 | 0 | | |
| 79 | Subcontractor Coordination | | | | | | | | | | | | | | | | | | | | | | | | |

Exhibit C (5 of 9)

[illegible]



Exhibit C (6 of 9)

April 23, 2018

Website: www.dcaguam.com
Email: dca@dcaguam.com

Guam Waterworks Authority
Engineering Division, Room 202
Gloria B. Nelson Public Service Building
688 Route 15, Mangilao, GU 96913

Attention: **Mr. Thomas F. Cruz, Chief Engineer, GWA / George Watson, Brown & Caldwell**

Subject: **GWA RFP-04-ENG--2017, Construction Management Services for Asan-Adelup-Hagatna Route 1 Sewerline Rehabilitation and Replacement, GWA Project No. S15-002-EPA**

Re: *Revised Fee Proposal Related to Bid Schedule B*

Hafa Adai:

Duenas, Camacho & Associates, Inc. is pleased to submit this *revised* fee proposal for **GWA RFP-04-ENG-2017, Construction Management Services for Asan-Adelup-Hagatna Route 1 Sewerline Rehabilitation and Replacement, GWA Project No. S15-002-EPA**. The revisions address the following changes:

1. Fee estimate for CM Services under Base Bid Schedule B – Cut and Cover Construction of New Sewer Lines based on the projected Construction Contract Completion Period from 450 to **650** calendar days.
Fee Estimate: \$870,610.41 including a \$20,000 Time & Material allowance for Material Testing
2. 2018 (current) DCA Personnel Labor and OH Rates
3. A GRT Tax Rate of 5% (recently enacted into law)

Our revised fee estimate for construction management services for Base Bid Schedule B is supported by the attached detailed fee breakdown showing an estimate of effort and expenses for a construction period of 650 calendar days and the *deletion* of Secure Safe Solutions for video surveillance (as requested by GWA). Geo-Engineering & Testing Inc. will provide geotechnical consultation and quality assurance material testing services.

The estimate of CM effort is based on the following assumptions for Base Bid Schedule B:

1. The Scope of CM services and tasks as described in the RFP;
2. Base Bid Schedule B as described in the amended Bid Form provided to DCA;
3. Revised projected construction duration of from 450 to 650 calendar days;
4. Full-time resident inspection and supplementary inspection of 50% of the resident inspection effort;
5. Current (2018) DCA personnel rates (loaded).

We look forward to negotiations.

Sincerely,

//Signed

JOHN P. DUENAS, P.E.
President

Enclosures

Exhibit C(7 of 9)

EXHIBIT A - BASE BID SCHEDULE B

DCA EXPENSES

| DUENAS, CAMACHO & ASSOCIATES, INC | | | | | |
|--|--------------------------------|--------------|-------|---------|-------------|
| CONSTRUCTION MANAGEMENT SERVICES FOR ASAN-ADELUP-HAGATNA ROUTE 1 SEWERLINE | | | | | |
| | | | | | |
| CM Inspection Related Expenses | | Unit | Quan | Rate | Cost |
| 1 | Miscellaneous Expenses | LS | | | \$ 500.00 |
| 2 | Mileage (Inspection) | mi | 4650 | \$ 0.33 | \$ 1,687.95 |
| 3 | Mileage (miscellaneous) | mi | 3150 | \$ 0.33 | \$ 1,143.45 |
| 4 | Pictures, video, etc. | LS | | | \$ 250.00 |
| 5 | Reproduction | LS | | | \$ 3,500.00 |
| 6 | Communications, etc. | LS | | | \$ 500.00 |
| 7 | Miscellaneous Survey Materials | LS | | | \$ 500.00 |
| | | GRT | 5.25% | | \$ 424.27 |
| | | DCA EXPENSES | | | \$ 8,505.67 |

CH2M EXPENSES

| CH2M | | | | | |
|--|--|---------------|------|-------------|------|
| CONSTRUCTION MANAGEMENT SERVICES FOR ASAN-ADELUP-HAGATNA ROUTE 1 SEWERLINE | | | | | |
| REHABILITATION AND REPLACEMENT, GWA PROJECT NO. S15-002-EPA | | | | | |
| | | Unit | Quan | Rate | Cost |
| 1 | Travel expenses for CH2M CIPPSpec Site Visit | | 0 | \$ 3,000.00 | \$ - |
| 2 | Lodging (28 days total) | Days | 0 | \$ 215.00 | \$ - |
| 3 | Meals | Days | 0 | \$ 75.00 | \$ - |
| 4 | Rental Car | Days | 0 | \$ 50.00 | \$ - |
| 5 | Misc. Expenses | Trip | 0 | \$ 100.00 | \$ - |
| | | | | | |
| | | Subtotal | | | \$ - |
| | | CH2M EXPENSES | | | \$ - |

A-29

4/24/18

A-30

4/26/18

EXHIBIT B



Website: www.dcaguam.com
Email: dca@dcaguam.com

November 6, 2020

Miguel C. Bordallo, P.E.
General Manager, Guam Waterworks Authority
Gloria B. Nelson Public Service Building
688 Route 15
Mangilao, Guam, 96913

Attn: John Riegel P.E., Brown & Caldwell Project Manager

Subject: **RFP 04-ENG-2017, GWA S15-002-EPA, Asan-Adelup-Hagatna – Route 1 Sewer Rehabilitation and Replacement**

Ref: **Change Order for Construction Management Services for the Asan-Adelup-Hagatna – Route 1 Sewer Rehabilitation and Replacement – Phase II**

Hafa Adai Mr. Riegel,

At the request of GWA, Duenas, Camacho and Associates (DCA) is submitting this change order proposal for the referenced services. This change order is intended to provide services for Phase II of the subject project in accordance with DCA's construction management services contract with GWA dated July 31, 2018. The construction duration used for this proposal is 425 calendar days. The fee for this change order proposal is: **\$571,550.**

Sincerely,

A handwritten signature in black ink, appearing to read 'K. Rekdahl', is written over a horizontal line.

Kenneth M. Rekdahl, P.E.
Vice-President
Duenas, Camacho & Associates, Inc.

Att:
Fee Breakdown

A-37



Duenas, Camacho and Assocait

Option 1

Year 1

ACV: 4.2 million

| Name | Price |
|------------------------|-----------------|
| Project Management Pro | \$7,925 |
| Quality & Safety | \$2,510 |
| Total | \$10,435 |

Total Price: **\$10,435**

Option 2

Year 1

ACV: 4.2 million

| Name | Price |
|------------------------|----------------|
| Project Management Pro | \$6,700 |
| Quality & Safety | \$2,250 |
| Total | \$8,950 |

Total Price: **\$8,950**

Procore Products

Connect the entire business process from bidding to closeout with every member of your team working together in the same system.

TOOLS INCLUDED WITH ALL PRODUCTS*

DIRECTORY

Everyone's digits, under the control of yours.

TASKS

Track and manage every coordination-related step in your process.

DOCUMENTS

When documents go digital, nothing gets lost.

REPORTS

Insights to help you analyze every detail.

APP MARKETPLACE

With over 150 partner solutions in our App Marketplace, connect with what works best for you—even if we don't build it.

* Excluding Invoice Management, Design Coordination and BIM.

PROJECT MANAGEMENT



Project Management Pro

RFIs

RFI software to remind, record, and remove excuses.

DAILY LOG

Capture everything you need to report to the office.

DRAWINGS

Revisions won't need markers, scissors, sticky notes, or tape.

TIMECARD

Fast time tracking for the project management team.

SUBMITTALS

Don't let inaccuracy sink your projects.

MEETINGS

Manage all aspects of your project meetings.

PUNCH LIST

Streamline construction with punch list software.

PHOTOS

Capture your questions, skills, and results in a snap.

SPECIFICATIONS

Intelligent Spec Management—save time while doing more.

SCHEDULE

Minimize confusion with integrated scheduling.

EMAILS

Open your inbox to everything you need to know.

TRANSMITTALS

Don't lose sleep over your important documents.

*Project Management Starter is also available - includes RFIs, Daily Log, Drawings, Punch List, Photos and Specifications.

PROCORE

procore.com | 866 477 6267

PROJECT MANAGEMENT

Quality & Safety

INSPECTIONS

Proactively identify hazards before they injure more than your reputation.

OBSERVATIONS

Track, assign, and report upon multiple types of observations and corrective actions on the fly.

INCIDENTS

Digitally capture and manage incidents easily and accurately.

DAILY LOG

Capture everything you need to report to the office.

FORMS

Simple to complex fillable PDF forms at your fingertips.

SCHEDULE

Minimize confusion with integrated scheduling.

PHOTOS

Capture your questions, skills, and results in a snap.

Design Coordination

COORDINATION ISSUES

Identify and resolve constructability issues prior to construction.

BIM

MODELS

Extremely performant BIM viewer.

FINANCIAL MANAGEMENT*

Project Financials

COMMITMENTS

Real-time statuses and values of all contracts and purchase orders.

CHANGE EVENTS

The new standard in construction for managing potential costs as they occur.

BUDGETS

Avoid profit erosion with accurate, configurable budgets.

CHANGE ORDERS

Reduce unrecoverable change orders with quicker approvals.

PRIME CONTRACT

Replace stacks of paper and printing costs with digital contract management.

COST MANAGEMENT

Avoid the price of being over budget with cost management.

Invoice Management

OWNER INVOICING

Prefill owner invoices with approved subcontractor invoices.

*Accounting Integrations available - additional fees apply.

SUBCONTRACTOR INVOICING

Empower the trades to be proactive about monthly invoices.

PROCORE

procore.com | 866 477 6267

PRECONSTRUCTION

Prequalification

PREQUALIFICATIONS

Manage the entire qualification process from forms to approvals.

PREQUALIFICATION PORTAL

Complete and submit qualification forms on a secure online platform.

Bid Management

BIDDING

Manage the entire bidding process from bid package creation to bid award.

PLANROOM

Access bid package details, files, and communications in order to submit a bid.

RESOURCE MANAGEMENT

Field Productivity

TIMESHEETS

Track employee and crew time for all projects on mobile or web.

T&M TICKETS

Document and track out-of-scope work to get paid for everything you do.

CREWS

Add, group, and edit crews—with one mobile, flexible tool.

TIMECARD

Fast time tracking for the project management team.

PRODUCTION TRACKING

Compare budgeted versus actual quantities to see percentage complete against each cost code.

PLATFORM

Analytics

PROCORE ANALYTICS

Leverage Analytics to turn project data into business insight.

DATA EXTRACT

Extract and combine data from Procore and across your tech stack.

PROCORE

procore.com | 866 477 6267