

1 THERESA G. ROJAS, ESQ.
2 Legal Counsel
3 Guam Waterworks Authority
4 Gloria B. Nelson Public Service Building
5 688 Route 15, Suite 304
6 Mangilao, Guam 96913
7 Telephone No: (671) 300-6848
8 Email: tgrojas@guamwaterworks.org



7 **BEFORE THE GUAM PUBLIC UTILITIES COMMISSION**

9 IN THE MATTER OF:

) **GWA DOCKET NO. 22-05**

10 **PETITION OF THE GUAM**
11 **WATERWORKS AUTHORITY TO**
12 **PROCURE AN INDEFINITE**
13 **DELIVERY/INDEFINITE**
14 **QUANTITY DESIGN-BUILD**
15 **CONTRACT AND AN INDEFINITE**
16 **DELIVERY/INDEFINITE**
17 **QUANTITY PROFESSIONAL**
18 **PROJECT/CONSTRUCTION**
19 **MANAGEMENT CONTRACT FOR**
20 **GWA'S ISLANDWIDE SEWER**
21 **COLLECTION/TRANSMISSION**
22 **SYSTEM REPAIR,**
23 **REHABILITATION, AND**
24 **REPLACEMENT PROJECT**

) **PETITION OF THE GUAM**
) **WATERWORKS AUTHORITY TO**
) **PROCURE AN INDEFINITE**
) **DELIVERY/INDEFINITE QUANTITY**
) **DESIGN-BUILD CONTRACT AND AN**
) **INDEFINITE DELIVERY/INDEFINITE**
) **QUANTITY PROFESSIONAL**
) **PROJECT/CONSTRUCTION**
) **MANAGEMENT CONTRACT FOR**
) **GWA'S ISLANDWIDE SEWER**
) **COLLECTION/TRANSMISSION**
) **SYSTEM REPAIR, REHABILITATION,**
) **AND REPLACEMENT PROJECT**

25 **COMES NOW**, the GUAM WATERWORKS AUTHORITY ("GWA"), by and through
26 its counsel of record, THERESA G. ROJAS, ESQ., and hereby files its Petition to the PUC for
27 its review and approval to allow GWA to begin two (2) separate procurements for (1) Indefinite
28 Delivery/Indefinite Quantity ("ID-IQ") Design-Build services and for (2) ID-IQ
Project/Construction Management services to support GWA's Sewer Collection/Transmission
Repair, Rehabilitation, and Replacement Project.

GWA Docket 22-05

PUC Review: Petition to Procure an ID/IQ Design-Build Contract and an ID/IQ Professional Project/Construction Management Contract for Islandwide Sewer Collection/Transmission System Repair, Rehabilitation, and Replacement Project

Page 1 of 4

BACKGROUND

In anticipation of a consent decree with the United States Environmental Protection Agency (“USEPA”), and for the protection of human and environmental health, GWA endeavors to enter into a (1) design build and (2) project management / construction management contract to repair, rehabilitate, and/or replace GWA’s public wastewater collection/transmission system.

The GWA public wastewater collection/transmission system, consisting of gravity mains, manholes (“MH”), laterals, force mains (“FM”), and related appurtenances, is in need of repair, rehabilitation, and/or replacement in various locations island-wide. Project locations to be considered include but are not limited to sites identified in GWA’s 2018 Water Resources Master Plan Update to include: Route 10 Barrigada gravity sewer, Route 1 Piti gravity sewer, Finile Drive Agat gravity sewer, and Route 1 Asan force main, with other locations to be determined based on priority and funding. The design and construction cost of the identified Master Plan projects are estimated to be Thirteen Million Thirty Thousand Dollars \$13,030,000.00 with additional projects to increase total contract costs. At this, the cost of an ID-IQ design build and an ID-IQ-project/construction management contract is anticipated to exceed One Million Dollars (\$1,000,000.00) each based on the current design-build and construction management contract of GWA’s Asan-Adelup-Hagatna Route 1 Sewerline Rehabilitation and Replacement Project.

REQUEST FOR APPROVAL

GWA now desires to procure an experienced and qualified sewer design-build contractor and an experienced and qualified professional to provide ID-IQ Project/Construction Management and ID-IQ design-build services to support the Sewer Collection/Transmission System Repair, Rehabilitation, and Replacement project. The ID-IQ design-build contractor will be selected through Multi-Step Sealed Bid and the ID-IQ Project/Construction Management services contract will be procured through a professional service Request for Proposal. These services are needed to augment GWA's resources and will assist to ensure continuity of sewer service to customers minimizing adverse impacts to the island.

The respective procurements are each estimated to exceed expenses of ONE MILLION DOLLARS (\$1,000,00.00) based on costs of sewer repairs already incurred from an earlier Asan-Adelup-Hagatna Route 1 Sewerline Rehabilitation Project. Therefore, pursuant to its Contract Review Protocol, GWA requests the PUC approve and allow GWA to begin and procure services for the (1) ID-IQ Design-Build contract via a Multi-Step bid and for (2) ID-IQ Project/Construction Management contract via a Request for Proposal. Funding for the procured services will come from grant funds, System Development Charge Funds, Internally Funded CIP funds, and bonds identified on GWA's Capital Improvement Plan.

In support of this Petition, approval for these respective procurements is anticipated by the CCU during its January 25, 2022, regular meeting via GWA Resolution 07-FY2022. Said draft resolution and its supporting exhibits are attached herein as Exhibit A and are incorporated by reference herein as if fully set forth. The supporting exhibits provide sufficient detail on the

project scope and justification for estimated costs. GWA Resolution No. 07-FY2022 is forthcoming and shall be filed to the PUC for review and consideration once final and approved.

CONCLUSION

Based on the foregoing, GWA requests the PUC allow GWA to begin two (2) separate procurements for (1) ID-IQ Design-Build services and (2) for ID-IQ Project/Construction Management services to support GWA's Sewer Collection/Transmission System Repair, Rehabilitation, and Replacement Project as it is reasonable, prudent, and necessary.

RESPECTFULLY SUBMITTED this 7th day of January, 2022.

By: **Theresa G. Rojas**
THERESA G. ROJAS
GWA Legal Counsel

Digitally signed by Theresa G. Rojas
Date: 2022.01.07 17:37:44 +10'00'



CONSOLIDATED COMMISSION ON UTILITIES
Guam Power Authority | Guam Waterworks Authority
P.O. Box 2977 Hagatna, Guam 96932 | (671)649-3002 | guamccu.org

DRAFT GWA RESOLUTION NO. ##-FY2022

**RELATIVE TO REQUESTING APPROVAL TO PROCURE AN INDEFINITE
DELIVERY/INDEFINITE QUANTITY DESIGN-BUILD SERVICES CONTRACT AND
AN INDEFINITE DELIVERY/INDEFINITE QUANTITY PROFESSIONAL
PROJECT/CONSTRUCTION MANAGEMENT SERVICES CONTRACT FOR GWA'S
ISLANDWIDE SEWER COLLECTION/TRANSMISSION SYSTEM REPAIR,
REHABILITATION, AND REPLACEMENT PROJECT**

WHEREAS, under 12 G.C.A. § 14105, the Consolidated Commission on Utilities ("CCU") has plenary authority over financial, contractual and policy matters relative to the Guam Waterworks Authority ("GWA"); and

WHEREAS, the Guam Waterworks Authority is a Guam Public Corporation established and existing under the laws of Guam; and

WHEREAS, GWA' public wastewater collection/transmission system, consisting of gravity mains, manholes (MH), laterals, force mains (FM), and related appurtenances, is in need of repair, rehabilitation, or replacement in various locations island-wide; and

WHEREAS, the GWA public wastewater collection/transmission system, is in occasional need of design-build services to address emergency repairs that exceed in-house resources; and

WHEREAS, GWA endeavors to enter into a contract to repair, rehabilitate, or replace the wastewater collection/transmission system for the protection of human and environmental health, and in anticipation of a consent decree with the United States Environmental Protection Agency (USEPA); and

1 **WHEREAS**, a variety of repair methods will be considered and used, to include Cured-
2 in-Place-Pipe (CIPP), spot repairs, open-trench pipe replacement depending on the situation and
3 location of sewer, with a primary consideration to minimize impacts while ensuring continuity
4 and quality of service, which require specialized services; and

5
6 **WHEREAS**, funding is available through bonds identified on the GWA Capital
7 Improvements Plan, grants, and System Development Charge Funds; and

8
9 **WHEREAS**, GWA is seeking an experienced and qualified sewer design-build
10 contractor to provide Indefinite Delivery – Indefinite Quantity (IDIQ) Sewer
11 Collection/Transmission System Repair, Rehabilitation, and Replacement services while
12 ensuring continuity of sewer service to customers and minimizing adverse impacts to the island;
13 and

14
15 **WHEREAS**, the IDIQ design-build contractor will be selected through a Multi-step
16 Sealed Bidding, consisting of a first step during which bidders submit un-priced technical offers
17 to be evaluated by GWA and a second step, under which those bidders whose technical offers
18 have been qualified under the criteria set forth during the first step solicitation, provide priced,
19 sealed bids; and

20
21 **WHEREAS**, GWA is seeking experienced and qualified professionals to provide IDIQ
22 Project/Construction Management services to support the IDIQ design-build of the Sewer
23 Collection/Transmission System Repair, Rehabilitation, and Replacement project; and

24
25 **WHEREAS**, the IDIQ Project/Construction Management services will be procured
26 through a request for proposals; and

27
28 **WHEREAS**, project locations to be considered include, but are not limited to, the
29 following sites identified in GWA's 2018 Water Resources Master Plan Update: Route 10
30 Barrigada gravity sewer, Route 1 Piti gravity sewer, Finile Drive Agat gravity sewer, and Route
31 1 Asan force main (see Exhibit A), with other locations to be determined based on priority and
32 funding; and

1
2 **WHEREAS**, due to the multiple sewer locations in need of repair, rehabilitation, or
3 replacement, multiple contracts per IDIQ procurement will be considered; and
4

5 **WHEREAS**, the design and construction cost of the identified Master Plan projects is
6 estimated to be Thirteen Million Thirty Thousand Dollars \$13,030,000.00 (see Exhibit A) and
7 additional projects will increase the contract value; and
8

9 **WHEREAS**, the cost of IDIQ project/construction management contract is anticipated to
10 exceed One Million Dollars (\$1,000,000.00) based on the current construction management
11 contract for the Asan-Adelup-Hagatna Route 1 Sewerline Rehabilitation and Replacement
12 Project (see Exhibit B); and
13

14 **WHEREAS**, the Public Utilities Commission (PUC) contract review protocol requires
15 GWA to obtain approval prior to advertising procurement for projects with an anticipated value
16 of One Million Dollars (\$1,000,000.00) or greater; and
17

18 **WHEREAS**, the CCU must approve all petitions to the PUC.
19

20 **NOW BE IT THEREFORE RESOLVED**, that the Consolidated Commission on
21 Utilities does hereby approve the following:
22

- 23 1. The recitals set forth above hereby constitute the findings of the CCU.
- 24 2. The CCU finds that the IDIQ Design-Build Sewer Collection/Transmission
25 System Repair, Rehabilitation, and Replacement is necessary for the protection
26 of human and environmental health, and to meet the anticipated consent decree
27 with the United States Environmental Protection Agency.
- 28 3. The CCU finds that the IDIQ Professional Project/Construction Management
29 Sewer Collection/Transmission System Repair, Rehabilitation, and Replacement
30 is necessary to support the IDIQ Design-Build Sewer Collection/Transmission
31 System Repair, Rehabilitation, and Replacement Project.
- 32 4. The CCU hereby further approves management to submit a petition to the PUC
 for the procurement of one IDIQ Design-Build solicitation and one IDIQ

Project/Construction Management solicitation for island-wide sewer repair, rehabilitation, and replacement.

RESOLVED, that the Chairman certified and the Board Secretary attests to the adoption of this Resolution.

DULY AND REGULARLY ADOPTED, this _____ day of _____, 2022.

Certified by:

Attested by:

JOSEPH T. DUENAS
Chairperson

MICHAEL T. LIMTIACO
Secretary

SECRETARY'S CERTIFICATE

I, Michael T. Limtiaco, Board Secretary of the Consolidated Commission on Utilities as evidenced by my signature above do hereby certify as follows:

The foregoing is a full, true and accurate copy of the resolution duly adopted at a regular meeting by the members of the Guam Consolidated Commission on Utilities, duly and legally held at a place properly noticed and advertised at which meeting a quorum was present and the members who were present voted as follows:

AYES: _____

NAYS: _____

ABSTENTIONS: _____

ABSENT: _____



GUAM WATERWORKS AUTHORITY

"Better Water, Better Lives."

Gloria B. Nelson Public Service Building | 688 Route 15 | Mangilao, Guam 96913

Tel: (671) 300-6846

DRAFT - Issues for Decision

Resolution No. ##-FY2022

Relative to Requesting Approval to Procure an Indefinite Delivery/Indefinite Quantity Design-Build Services Contract and an Indefinite Delivery/Indefinite Quantity Professional Project/Construction Management Services Contract for GWA's Islandwide Sewer Collection/Transmission System Repair, Rehabilitation, and Replacement Project

What is the project's objective and is it necessary and urgent?

The objective of this project is to seek CCU approval to petition the Public Utilities Commission (PUC) for the procurement of:

- (1) an Indefinite Delivery/Indefinite Quantity (IDIQ) Design-Build services contract for the Islandwide Sewer Collection/Transmission Repair, Rehabilitation, and Replacement Project, and
- (2) an IDIQ Project/Construction Management services contract to support the Sewer Collection/Transmission Repair, Rehabilitation, and Replacement Project.

The IDIQ contracts are anticipated to exceed \$1,000,000.00 and therefore require PUC approval for procurement, per the Contract Review Protocol.

Due to the multiple sewer locations in need of repair, rehabilitation, or replacement, multiple contracts per IDIQ procurement will be considered.

The project will improve the sewer collection/transmission system, which includes repairing, rehabilitating and/or replacing sewer gravity lines, manholes, laterals, force mains (FM), and related appurtenances. GWA endeavors to enter into contracts to repair, rehabilitate, or replace the sewer collection/transmission system for the protection of human and environmental health, in anticipation of a consent decree with the United States Environmental Protection Agency (USEPA), and to have services in place to complete emergency repairs better suited to a contractor than in-house maintenance resources.

Where is the location?

Project sites will be islandwide, based on priority and funding. Project locations to be considered include, but are not limited to, the following sites identified in GWA's 2018 Water Resources Master Plan Update: Route 10 Barrigada gravity sewer, Route 1 Piti gravity sewer, Finile Drive Agat gravity sewer, and Route 1 Asan force main.

How much will it cost?

The Master Plan projects identified above have an estimated construction cost of \$13,030,000.00. The addition of other project sites may increase this total.

The project/construction management contract is anticipated to exceed \$1,000,000.00, based on the current construction management contract for the Asan-Adelup-Hagatna Route 1 Sewerline Rehabilitation and Replacement Project (\$1,557,671.45).

When will it be completed?

The completion of task orders will depend on site-specific conditions including, the severity of repairs, extent of sewer replacement, environmental conditions, and permitting requirements. The contracts will be for five years at the start of the Notice to Proceed, with the option to extend per Guam law.

What is the funding source?

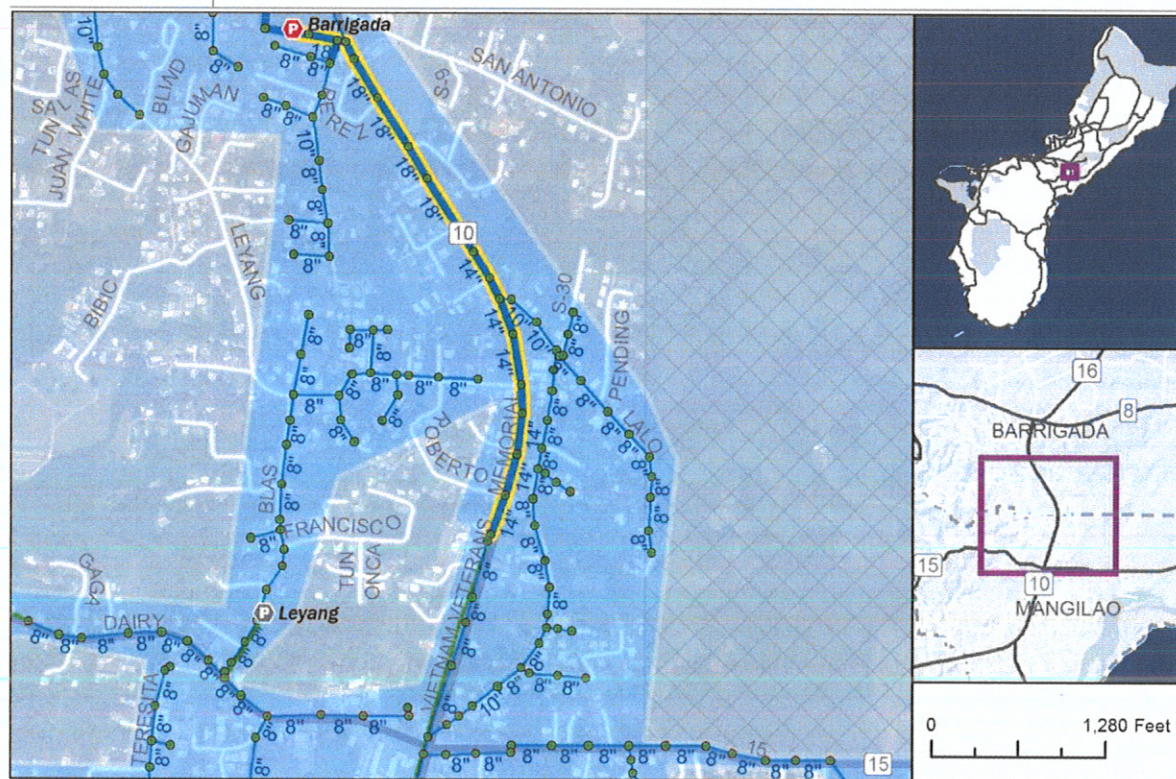
The funding for this project is available through bonds identified on GWA's Capital Improvements Plan, grants, and System Development Charge Funds.

EXHIBIT A

GWA Master Plan Projects

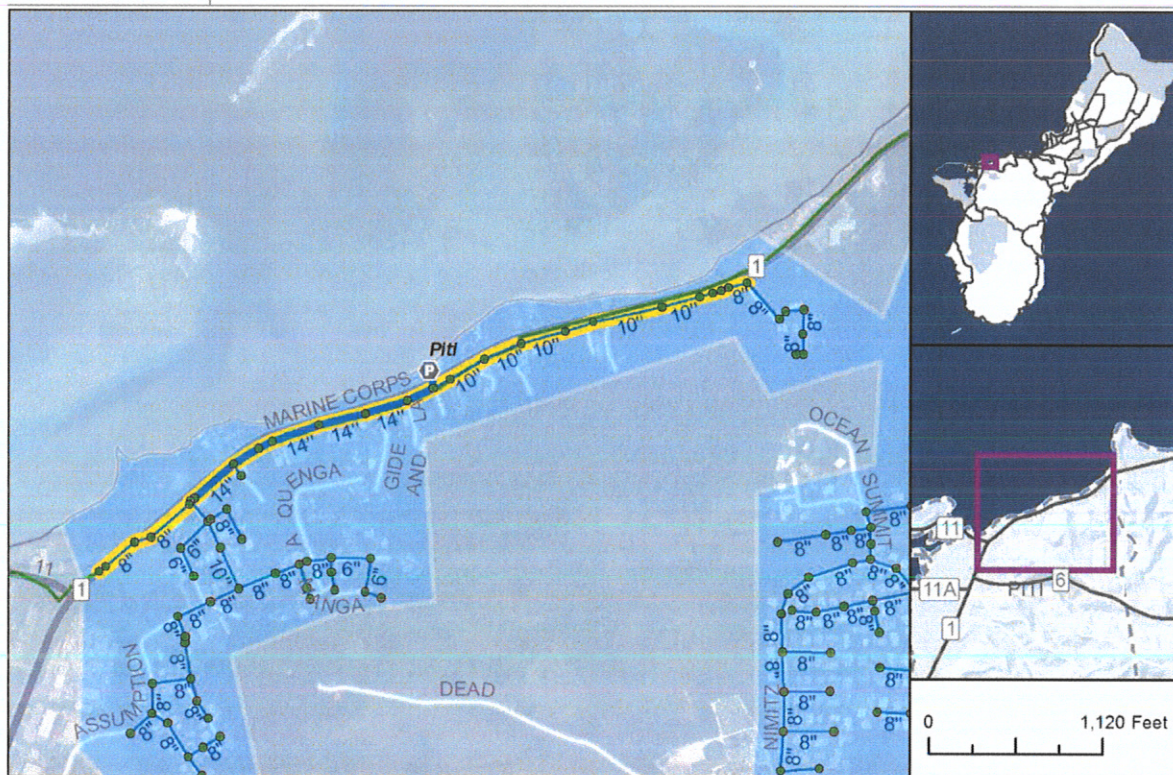
Number	Project	Cost Estimate
MP-WW-Pipe-02	Barrigada Pump Station Pipe Rehabilitation/Replacement	\$5,420,000
MP-WW-Pipe-03	Route 1 Piti Pipe Rehabilitation/Replacement	\$4,480,000
MP-WW-Pipe-26	Finile Drive Rehabilitation – Agat	\$830,000
MP-WW-FM-03	Route 1 Asan Force Main Rehabilitation/Replacement	\$2,300,000
Total		\$13,030,000

Barrigada Pump Station Pipe Rehabilitation/Replacement			
Project Number	MP-WW-Pipe-02	Basin	Hagåtña
Description	Replace approximately 4,420 feet of gravity piping along Route 10 from the Mangilao force main to the Barrigada pump station (shown below in yellow). Section 8 discusses I/I issues along this pipeline that should be investigated before replacing this pipeline.		
Justification	The original pipeline liner is blistering and separating from the pipe. The pipeline will probably need to be replaced.		
Proposed Schedule	Begin Design: 2022		
Cost Estimate	\$5.42M		
Reference Documents	WRMPU Volume 3, Section 4, Table 4-13		



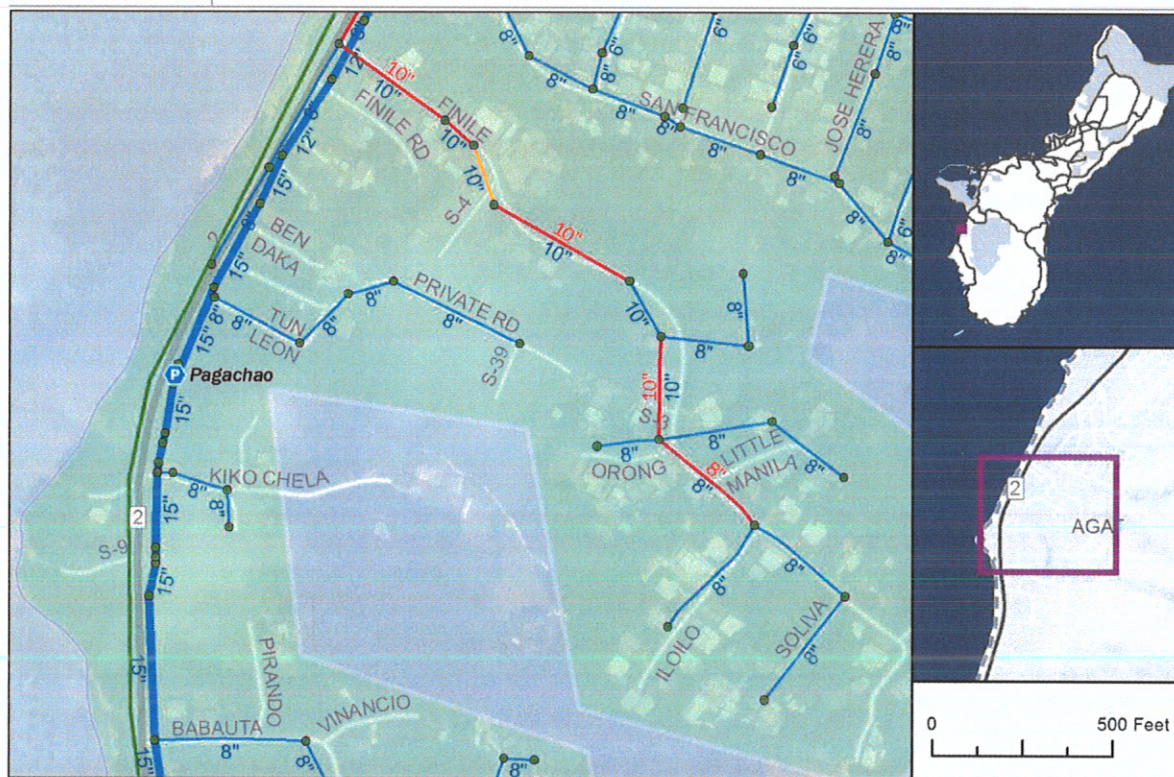
This proposed project is subject to change. Projects will generally include an engineering study, detailed design, and field verification to refine the exact project scope and budget. Costs are presented in 2017 dollars and do not account for increases due to inflation and escalation. See Volume 1, Appendix D for cost estimate assumptions.

Route 1 Piti Pipe Rehabilitation/Replacement			
Project Number	MP-WW-Pipe-03	Basin	Hagåtña
Description	Rehabilitate or replace approximately 4,675 feet of gravity piping in Piti along Marine Corp Drive (shown below in yellow). The project will evaluate the use of CIPP options and open cut and replace construction to complete the necessary repairs.		
Justification	The original liner on this pipeline is in poor condition. The crowns of the pipes are deteriorated and GWA is concerned that jetting the pipe for routine maintenance could cause a failure.		
Proposed Schedule	Begin Design: 2018		
Cost Estimate	\$4.48M		
Reference Documents	WRMPU Volume 3, Section 4, Table 4-13		



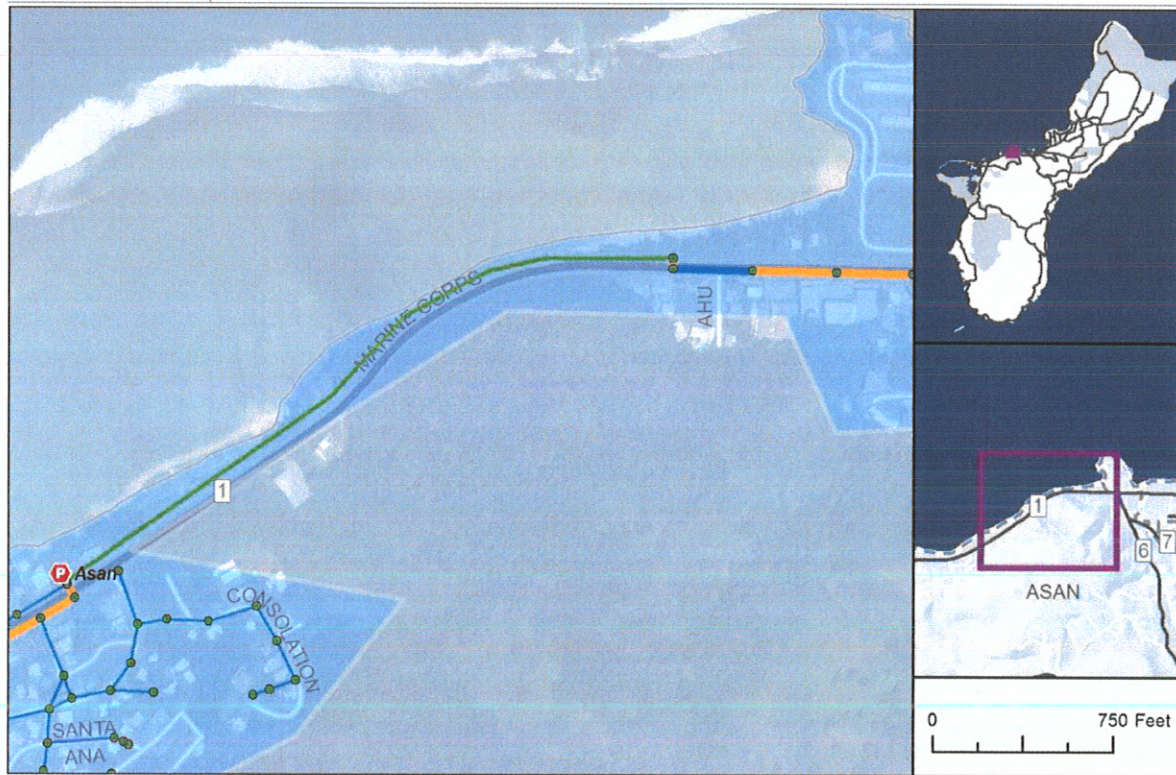
This proposed project is subject to change. Projects will generally include an engineering study, detailed design, and field verification to refine the exact project scope and budget. Costs are presented in 2017 dollars and do not account for increases due to inflation and escalation. See Volume 1, Appendix D for cost estimate assumptions.

Finile Drive Rehabilitation - Agat			
Project Number	MP-WW-Pipe-26	Basin	Agat
Description	Rehabilitate or replace approximately 1,540 feet of gravity piping in Agat along Finile Drive (shown below in red and orange). The project will evaluate the use of CIPP options and open cut and replace construction to complete the necessary repairs.		
Justification	This piping has been identified by field investigation to be in very poor condition and requires rehabilitation or replacement.		
Proposed Schedule	Begin Design: 2019		
Cost Estimate	\$830,000		
Reference Documents	Southern SSES Rehabilitation – Phase 1 (Agat-Santa Rita-Umatat-Merizo) (BC, 2016)		



This proposed project is subject to change. Projects will generally include an engineering study, detailed design, and field verification to refine the exact project scope and budget. Costs are presented in 2017 dollars and do not account for increases due to inflation and escalation. See Volume 1, Appendix D for cost estimate assumptions.

Route 1 Asan Force Main Rehabilitation/Replacement			
Project Number	MP-WW-FM-03	Basin	Hagåtña
Description	Replace the force main along Route 1 (shown below in green).		
Justification	The force main has been exposed in this location due to erosion along the coastline. The pipe has required spot repairs in the past and a long-term solution is required.		
Proposed Schedule	Begin Design: 2018		
Cost Estimate	\$2.30M		
Reference Documents	WRMPU Volume 3, Section 5.2		



This proposed project is subject to change. Projects will generally include an engineering study, detailed design, and field verification to refine the exact project scope and budget. Costs are presented in 2017 dollars and do not account for increases due to inflation and escalation. See Volume 1, Appendix D for cost estimate assumptions.



EXHIBIT B

CONSOLIDATED COMMISSION ON UTILITIES
Guam Power Authority | Guam Waterworks Authority
P.O. Box 2977 Hagatna, Guam 96932 | (671)649-3002 | guamccu.org

GWA RESOLUTION NO. 04-FY2021

**RELATIVE TO APPROVAL OF A CHANGE ORDER FOR A CONSTRUCTION
MANAGEMENT CONTRACT FOR PHASE II OF THE ASAN-ADELUP-HAGATNA,
ROUTE 1 SEWERLINE REHABILITATION AND REPLACEMENT PROJECT
S15-002-EPA**

WHEREAS, under 12 G.C.A. § 14105, the Consolidated Commission on Utilities ("CCU") has plenary authority over financial, contractual, and policy matters relative to the Guam Waterworks Authority ("GWA"); and

WHEREAS, the Guam Waterworks Authority ("GWA") is a Guam Public Corporation established and existing under the laws of Guam; and

WHEREAS, GWA has received a grant from the United States Environmental Protection Agency ("USEPA") under the State Revolving Fund ("SRF") program to improve the sewer collection system, which included the gravity sewer line along Route 1, from the Asan "War in the Pacific" National Historical Park to the Agana Main Pump Station; and

WHEREAS, the segments of gravity sewer line indicated is deteriorating and has experienced collapses, bellies in the sewer line, offsets, and sections of missing or badly corroded pipe, and the intent of this project is to rehabilitate, repair or replace these sections; and

WHEREAS, GWA procured construction management (CM) services through Request for Proposal No. RFP-04-ENG-2017 that included CM services for the Rt.1 Sewer Line Rehabilitation and Replacement Project from Asan to Hagatna; and

WHEREAS, due to funding limitations, the full scope of work for construction of the Rt.1 Sewer Rehabilitation and Replacement Project was divided into phases such that Phase I construction was awarded to InfraTech International LLC for Phase I, from Asan to the Asan

1 Pump Station, through Invitation for Re-Bid No. IFB-11-ENG-2017 (GWA Project No. S15-
2 002-EPA) and Phase II, from the Asan Pump Station to Adelup and toward Hagatna, was
3 recently advertised through Invitation for Bid no. IFB-06-ENG-2020 (GWA Project No. S15-
4 002-EPA); and

5
6 **WHEREAS**, GWA selected Duenas, Camacho & Associates, Inc. (DCA) for the CM
7 Services, and negotiated with DCA for Phase I in the amount of amount of Eight Hundred
8 Seventy Thousand Six Hundred Ten Dollars and Forty-One Cents (\$870,610.41); and

9
10 **WHEREAS**, by Resolution No. 30-FY2018, see Exhibit A, the CCU authorized
11 awarding the CM services contract to DCA and CM services was contracted to DCA for a
12 maximum amount of Nine Hundred Fifty-Seven Thousand Six Hundred Seventy-One Dollars
13 and Forty-Five Cents (\$957,671.45) which included Eighty-Seven Thousand Sixty-One Dollars
14 and Four Cents (\$87,061.04) for contingencies; and,

15
16 **WHEREAS**, GWA and USEPA agree that efforts to rehabilitate, repair or replace these
17 sewer lines are necessary and the proceeding order to accomplish such task is through services
18 that include construction management; and

19
20 **WHEREAS**, GWA is preparing to award a contract to the lowest responsive and
21 responsible bidder under the Phase II IFB; and,

22
23 **WHEREAS**, GWA requires CM services for Phase II construction and has negotiated a
24 fair and reasonable fee for such services from DCA under the scope of work advertised under
25 Request for Proposal No. RFP-04-ENG-2017; and,

26
27 **WHEREAS**, GWA management is requesting to amend the DCA contract to provide
28 construction management services for Phase II in the amount of Five Hundred Seventy-One
29 Thousand Five Hundred Fifty (\$571,550.00), see Exhibit B, including a contingency amount of
30 Twenty-Eight Thousand Four Hundred Fifty Dollars (\$28,450.00), for a total amount of Six
31 Hundred Thousand Dollars (\$600,000.00); and,

1 **WHEREAS**, funding for this project will be from the USEPA State Revolving Fund and,
2 if necessary, GWA Bond funds.

3
4 **NOW BE IT THEREFORE RESOLVED**, the Consolidated Commission on Utilities
5 does hereby approve the following:

- 6 1. The recitals set forth above hereby constitute the findings of the CCU.
7 2. The CCU finds that the terms of the fee proposal submitted by DCA are fair
8 and reasonable (See Exhibit B).
9 3. The CCU finds that the terms of the conditions set by GWA relative to
10 commencement of work activities are fair and reasonable and serve as a
11 measure of Quality Assurance/Quality Control (QA/QC).
12 4. The CCU hereby authorizes the management of GWA to execute a Change
13 Order to the contract with DCA in the amount of Six Hundred Thousand
14 Dollars (\$600,000.00).
15 5. The CCU hereby further approves the total funding for the CM contract with
16 DCA in the amount of One Million Five Hundred Fifty-Seven Thousand Six
17 Hundred and Seventy-One Dollars and Forty-Five Cents (\$1,557,671.45).
18

19 **RESOLVED**, that the Chairman certified, and the Board Secretary attests to the adoption
20 of this Resolution.
21

22 **DULY AND REGULARLY ADOPTED**, this 24th day of November 2020.
23

24 Certified by:

25 
26

27 **JOSEPH T. DUENAS**

28 Chairperson

24 Attested by:

25 
26

27 **MICHAEL T. LIMTIACO**

28 Secretary

29 //

30
31 //
32

1
2
3
4
5
6
7
8
9
0
1
2
3
4
5
6
7
8
9
0
1
2
3
4
5
6
7
8
9
0
1

The foregoing is a full, true and accurate copy of the resolution duly adopted at a regular meeting by the members of the Guam Consolidated Commission on Utilities, duly and legally held at a place properly noticed and advertised at which meeting a quorum was present and the members who were present voted as follows:

/// ///



EXHIBIT A



CONSOLIDATED COMMISSION ON UTILITIES
Guam Power Authority | Guam Waterworks Authority
P.O. Box 2977 Hagatna, Guam 96932 | (671)649-3002 | guamccu.org

RESOLUTION NO. 30-FY2018

RELATIVE TO APPROVAL OF A CONSTRUCTION MANAGEMENT CONTRACT FOR THE ASAN-ADELUP-HAGATNA, ROUTE 1 SEWERLINE REHABILITATION AND REPLACEMENT PROJECT S15-002-EPA

WHEREAS, under 12 G.C.A. § 14105, the Consolidated Commission on Utilities (“CCU”) has plenary authority over financial, contractual, and policy matters relative to the Guam Waterworks Authority (“GWA”); and

WHEREAS, the Guam Waterworks Authority (“GWA”) is a Guam Public Corporation established, and existing under the laws of Guam; and

WHEREAS, GWA has received a grant from the United States Environmental Protection Agency (“USEPA”) under the State Revolving Fund (“SRF”) program to improve the sewer collection system, which included the gravity sewer line along Route 1, from the Asan “War in the Pacific” National Historical Park to the Agana Main Pump Station; and

WHEREAS, the segments of gravity sewer line indicated is deteriorating and has experienced collapses, bellies in the sewer line, offsets, and sections of missing or badly corroded pipe, and the intent of this project is to rehabilitate, repair or replace these sections; and

WHEREAS, GWA procured engineering design services through RFP-02-ENG-2015 that included general civil engineering, geotechnical engineering, and archeological investigation for wastewater collection system evaluation, analysis and detailed design; and

WHEREAS, the professional engineering design services have been completed by HDR Engineering, Inc. through contract, which was signed on December 10, 2015, and all rendered design documents have been accepted by GWA in May 2017; and

1
2 **WHEREAS**, GWA and USEPA agree that efforts to rehabilitate, repair or replace these
3 sewer lines are necessary and the proceeding order to accomplish such task is through services
4 that include construction management; and
5

6 **WHEREAS**, GWA has advertised the Request for Proposal (RFP-04-ENG-2017) dated
7 March 30, 2017, soliciting statement of qualifications from experienced and qualified
8 engineering firms to provide construction management services for the ASAN-ADELUP-
9 HAGATNA, ROUTE 1 SEWERLINE REHABILITATION AND REPLACEMENT PROJECT;
10 and
11

12 **WHEREAS**, RFP packages were downloaded by multiple interested parties, from which
13 GWA received proposal submittal from eight (8) engineering firms before the RFP submittal
14 deadline; and
15

16 **WHEREAS**, the GWA A-E Selection Committee reviewed and evaluated the eight (8)
17 proposals (see EXHIBIT A-Evaluation Score) and generated a short list of the top three (3) firms
18 with a recommendation to award a contract to the firm DUENAS, CAMACHO &
19 ASSOCIATES, INC. ("DCA") and any successor at interest thereto (see EXHIBIT B- GM
20 Determination); and
21

22 **WHEREAS**, GWA advertised the initial Invitation to Bid (IFB-06-ENG-2017) for the
23 construction of this project on May 12, 2017, and received no responsive and responsible
24 bidders; and
25

26 **WHEREAS**, GWA advertised a second time, with the Invitation to Re-Bid (IFB-11-
27 ENG-2017) on October 31, 2017, and again received no responsive and responsible bidders; and
28

29 **WHEREAS**, Following the second attempt, GWA revised the bid documents and Bid
30 Form to include two separate, independent Bid Schedules, Bid Schedule A and Bid Schedule B,
31 with Bid Schedule A being primarily repairs by Cured-In-Place-Pipe installation, and Bid
32 Schedule B being repairs entirely by Open Cut and Replacement; and

1
2 **WHEREAS**, GWA advertised the next Invitation to Re-Bid (IFB-05-ENG-2018) on May
3 4, 2018, with the two revised Bid Schedules; and

4
5 **WHEREAS**, Bid Schedule A will be opened first, and if bids should be opened and
6 found to be responsive and responsible, the lowest responsive and responsible bid will be
7 selected; and

8
9 **WHEREAS**, if no Contractors submit for Bid Schedule A, Bid Schedule B will then be
10 opened, and the lowest responsive and responsible bid will be selected from Bid Schedule B; and

11
12 **WHEREAS**, DCA and GWA negotiated the price for the construction management
13 services to be provided if either Bid Schedule A or Bid Schedule B is selected; and

14
15 **WHEREAS**, If Bid Schedule A is selected, the construction management services with
16 DCA will be in the amount of Six Hundred Eighty-Three Thousand Nine Hundred Thirty-One
17 Dollars and Thirty-Four Cents (\$683,931.34) on a Time and Materials basis (See EXHIBIT C –
18 Fee Proposal); and

19
20 **WHEREAS**, If Bid Schedule B is selected, the construction management services with
21 DCA will be in the amount of Eight Hundred Seventy Thousand Six Hundred Ten Dollars and
22 Forty-One Cents (\$870,610.41) on a Time and Materials basis (See EXHIBIT C – Fee Proposal);
23 and

24
25 **WHEREAS**, GWA Management seeks approval of the fee proposal for the Scope of
26 Work relative to the construction Bid Schedule B, which includes construction management,
27 inspection, and project coordination services during construction of Eight Hundred Seventy
28 Thousand Six Hundred Ten Dollars and Forty-One Cents (\$870,610.41), plus a ten percent
29 (10%) contingency of Eighty-Seven Thousand Sixty-One Dollars and Four Cents (\$87,061.04),
30 for a total amount of Nine Hundred Fifty-Seven Thousand Six Hundred Seventy-One Dollars
31 and Forty-Five Cents (\$957,671.45); and
32

1 **WHEREAS**, funding for this project will be from the USEPA State Revolving Fund and,
2 if necessary, GWA Bond funds applicable to the project; and

3
4 **NOW BE IT THEREFORE RESOLVED**, the Consolidated Commission on Utilities
5 does hereby approve the following:

- 6 1. The recitals set forth above hereby constitute the findings of the CCU.
7 2. The CCU finds that the terms of the fee proposal submitted by Duenas, Camacho
8 & Associates, Inc. (DCA) are fair and reasonable.
9 3. The CCU finds that the terms of the conditions set by GWA relative to
10 commencement of work activities are fair and reasonable and serve as a measure
11 of Quality Assurance/Quality Control (QA/QC).
12 4. The CCU hereby authorizes the management of GWA to enter into a contract
13 with DCA in the amount of Eight Hundred Seventy Thousand Six Hundred Ten
14 Dollars and Forty-One Cents (\$870,610.41) (EXHIBIT C).
15 5. The CCU hereby further approves the total funding amount for this project of
16 Eight Hundred Seventy Thousand Six Hundred Ten Dollars and Forty-One Cents
17 (\$870,610.41), plus a ten percent (10%) contingency of Eighty-Seven Thousand
18 Sixty-One Dollars and Four Cents (\$87,061.04), to bring the total authorized
19 funding amount to a maximum of Nine Hundred Fifty-Seven Thousand Six
20 Hundred Seventy-One Dollars and Forty-Five Cents (\$957,671.45).

21
22 **RESOLVED**, that the Chairman certified and the Board Secretary attests to the adoption
23 of this Resolution.

24 //

25 //

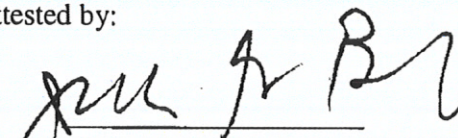
26
27 **DULY AND REGULARLY ADOPTED**, this 22nd day of May 2018.

28
29 Certified by:

30 Attested by:

31 

32 **JOSEPH T. DUENAS**
Chairperson

31 
32 **J. GEORGE BAMBA**
Secretary

1
2
3
4
5
6
7
8
9
10
11
12
13
14
15
16
17
18
19
20
21
22
23
24
25
26
27
28
29
30
31
32

SECRETARY'S CERTIFICATE

I, J. George Bamba, Board Secretary of the Consolidated Commission on Utilities as evidenced by my signature above do hereby certify as follows:

The foregoing is a full, true and accurate copy of the resolution duly adopted at a regular meeting by the members of the Guam Consolidated Commission on Utilities, duly and legally held at a place properly noticed and advertised at which meeting a quorum was present and the members who were present voted as follows:

AYES: 4
NAYS: 0
ABSTENTIONS: 0
ABSENT: 1



///

///

///

///

Exhibit A (1 of 2)




GUAM WATERWORKS AUTHORITY

Gloria B. Nelson Public Service Building • 688 Route 15 • Mangilao, Guam 96913

May 19, 2017

To: Thomas F. Cruz, P.E., Chief Engineer

From: Gloria P. Bensan 
Chairperson, Consultant Selection Board

Subject: RFP-04-ENG-2017
Construction Management Services for the Asan-Adelup-Hagatna, Route 1
Sewerline Rehabilitation and Replacement
GWA Project No. S15-002-EPA

The following information is intended to document the evaluation process undertaken for the referenced solicitation.

EVALUATION COMMITTEE MEMBERS	
Name	Title
Clinton Huntington II	Senior Engineer
Rylma Carino	Junior Engineer
Anthony Chargualaf	Operations Manager
George Watson	Brown & Caldwell, PMO

Consultant	Evaluation Score				Total	Rank
1. AmOrient	85	89	81	75	330	4
2. EMPSCO Engineering Consultants	62	90	86	86	324	5
3. LYON	80	85	80	70	315	7
4. E.M. Chen & Associates, Inc.	77	88	81	70	316	6
5. Duenas, Camacho & Associates	82	92	92	90	356	1
6. TG Engineers, PC	83	91	90	85	349	2
7. Coeval Design Partners	70	84	74	66	294	8
8. AECOM	75	89	86	89	339	3

Scores were evaluated based on sum of the individual scores. The recommendation of the evaluation committee is shown in the ranking above.

Please review and approve at your earliest convenience so that we may proceed with the notification letters.

Exhibit A (2 of 2)

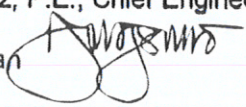


GUAM WATERWORKS AUTHORITY

"Better Water. Better Lives."

Gloria B. Nelson Public Service Building
688 Route 15, Mangilao, Guam 96913

MEMORANDUM

TO: Thomas F. Cruz, P.E., Chief Engineer
FROM: Gloria P. Bensaon 
SUBJECT: CM Selection
DATE: May 18, 2017

Per our discussion with the General Manager and Legal Counsel on May 15, 2017, the CM selection team reconvened on May 16, 2017 at 2:30 pm to discuss the merits of evaluation for each proposal submitted for the following projects:

1. Asan-Adelup-Hagatna, Route 1 Sewerline Rehabilitation and Replacement
2. Route 2 War in the Pacific National Park Sewerline Rehabilitation and Replacement

Each selection committee reviewed the RFP proposals and reevaluated them based on the predetermined set of criteria. Committee members obtained reasonable, rational and consistent basis for their scores in comparison to the evaluation criteria outlined in the solicitation documents and determined the final ranking of proposers as shown in the attached evaluation summary.


Exhibit B (1 of 1)

GUAM WATERWORKS AUTHORITY

"Better Water. Better Lives."
Gloria B. Nelson Public Service Building
688 Route 15, Mangilao, Guam 96913

MEMORANDUM

To: Miguel C. Bordallo, P.E., General Manager

From: Thomas F. Cruz, P.E., Chief Engineer 

Subject: RFP-04-ENG-2017
Construction Management Services for the Asan-Adelup-Hagatna, Route 1
Sewerline Rehabilitation and Replacement
GWA Project No. S15-002-EPA

Date: May 19, 2017

The Selection Committee has completed all necessary actions for selecting the most qualified consultant for the referenced solicitation. All proposals were reviewed and scored according to the conditions established in the solicitation. The evaluation summary sheet is attached for your information.

The committee recommends the following top three (3) firms in order of preference for the project:

1. Duenas, Camacho & Associates
2. TG Engineers, PC
3. AECOM

Concurred:


VINCENT E. GUERRERO
Supply Management Administrator

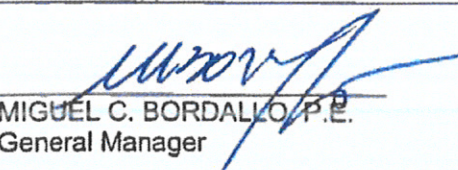
5/22/2017
Date

GENERAL MANAGER'S DETERMINATION

Consultant Firm Selected:

DUEÑAS CAMACHO & ASSOC.

Remarks:


MIGUEL C. BORDALLO, P.E.
General Manager

5.23.17
Date



Exhibit C (1 of 9)

Website: www.dcaguam.com
Email: dca@dcaguam.com

April 23, 2018

Guam Waterworks Authority
Engineering Division, Room 202
Gloria B. Nelson Public Service Building
688 Route 15, Mangilao, GU 96913

Attention: **Mr. Thomas F. Cruz, Chief Engineer, GWA / George Watson, Brown & Caldwell**

Subject: **GWA RFP-04-ENG--2017, Construction Management Services for Asan-Adelup-Hagatna Route 1 Sewerline Rehabilitation and Replacement, GWA Project No. S15-002-EPA**

Re: **Revised Fee Proposal Related to Bid Schedules A and B**

Hafa Adai:

Duenas, Camacho & Associates, Inc. is pleased to submit this *revised* fee proposal for **GWA RFP-04-ENG-2017, Construction Management Services for Asan-Adelup-Hagatna Route 1 Sewerline Rehabilitation and Replacement, GWA Project No. S15-002-EPA**. The revisions and updates include the following:

1. Fee estimates for:
 - a. CM Services under Base Bid Schedule A – CIPP Rehabilitation of Existing Sewer Lines
Revised Fee Estimate: \$683,931.34 including a \$10,000 Time & Material allowance for Material Testing
 - b. ~~CM Services under Base Bid Schedule B – Cut and Cover Construction of New Sewer Lines~~
~~Fee Estimate: \$654,143.21 including a \$20,000 Time & Material allowance for Material Testing~~
Revised estimate for Bid Schedule B attached.
2. 2018 (current) DCA Personnel Labor and OH Rates
3. A GRT Tax Rate of 5% (recently enacted into law)

Our revised fee estimates for construction management services for each Bid Schedule are supported by the following:

- Detailed Fee Breakdown showing an estimate of effort and expenses
- Exhibit A – Estimated expenses for DCA and CH2M submitted earlier (no change)
- Deletion of Secure Safe Solutions for video surveillance (as requested by GWA)

As indicated in our Proposal submitted in response to the subject RFP, DCA will retain CH2M (our CM Team CIPP Specialist) if a Construction Contract is awarded under Base Bid Schedule A – CIPP Rehabilitation of Existing Sewer Lines. Geo-Engineering & Testing Inc. will provide geotechnical consultation and quality assurance material testing services. The cost for video surveillance by Secure Safe Solutions has been removed at GWA's request.

The estimate of CM effort is based on the following assumptions:

1. The Scope of CM services and tasks as described in the RFP;
2. Base Bid Schedules A and B as described in the amended Bid Form provided to DCA;
3. Project construction duration of 450 calendar days;
4. Full-time resident inspection and supplementary inspection (25% of resident inspection effort for CM Services under Base Bid Schedule A and 50% of resident inspection effort for CM services under Base Bid Schedule B);

Exhibit C (2 of 9)

April 23, 2018

5. Part-time CM support by our CIPP Specialist from CH2M under Base Bid Schedule A;
6. Current (2018) DCA personnel rates (loaded).

We look forward to negotiations.

Sincerely,

//Signed

JOHN P. DUENAS, P.E.

President

Enclosures

Exhibit C (3 of 9)

Consolidated Fee Estimate

EXHIBIT A - BASE BID SCHEDULE A

DCA EXPENSES

DUENAS, CAMACHO & ASSOCIATES, INC				CONSTRUCTION	
MANAGEMENT SERVICES FOR ASAN-ADELUP-HAGATNA ROUTE 1 SEWERLINE				REHABILITATION AND	
CM Inspection Related Expenses				Unit	Cost
1	Miscellaneous Expenses	LS			
2	Mileage (Inspection)	mi	3200	\$ 0.33	\$ 1,161.60
3	Mileage (miscellaneous)	mi	2800	\$ 0.33	\$ 1,016.40
4	Pictures, video, etc.	LS			\$ 250.00
5	Reproduction	LS			\$ 3,500.00
6	Communications, etc.	LS			\$ 500.00
7	Miscellaneous Survey Materials	LS			\$ 250.00
		GRT	5.25%		\$ 376.85
				DCA EXPENSES	\$ 7,554.85

CH2M EXPENSES

CH2M				CONSTRUCTION	
MANAGEMENT SERVICES FOR ASAN-ADELUP-HAGATNA ROUTE 1 SEWERLINE				REHABILITATION AND	
REPLACEMENT, GWA PROJECT NO. S15-002-EPA					
		Unit	Quan	Rate	Cost
1	Travel expenses for CH2M CIPPSpec Site Visit		3	\$ 3,000.00	\$ 9,000.00
2	Lodging (28 days total)	Days	28	\$ 215.00	\$ 6,622.00
3	Meals	Days	28	\$ 75.00	\$ 2,310.00
4	Rental Car	Days	28	\$ 50.00	\$ 1,540.00
5	Misc. Expenses	Trip	3	\$ 100.00	\$ 330.00
	Subtotal				\$ 19,802.00
				CH2M EXPENSES	\$ 19,802.00

Exhibit C (4 of 9)

[illegible]

Exhibit C (5 of 9)

Task No.	Task Description	Principal In Charge	Subcontractor Manager	Project Construction Manager	Subcontractor Construction Manager	Construction Inspector (Supplementary)	Cost Engineer (Cost Support)	Self Engineer (Cost Support)	Engineering Technician (Cost Support)	Chief Constructional Scientist	2nd Cost	Chief Engineer	Administrative Architect (Cost Support)	TOTALS	Cost Project Manager (Cost Support)	Cost Project Engineer (Cost Support)	Cost Administrative Manager (Cost Support)	TOTALS	Principal Construction Engineer	Self Engineer	Administrative Architect
	Subcontractor & O&M Labor Rates	100.00	100.00	100.00	100.00	100.00	100.00	100.00	100.00	100.00	100.00	100.00	100.00	100.00	100.00	100.00	100.00	100.00	100.00	100.00	100.00
Subcontractor																					
1	CH2M	100.00	100.00	100.00	100.00	100.00	100.00	100.00	100.00	100.00	100.00	100.00	100.00	100.00	100.00	100.00	100.00	100.00	100.00	100.00	100.00
2	CH2M	100.00	100.00	100.00	100.00	100.00	100.00	100.00	100.00	100.00	100.00	100.00	100.00	100.00	100.00	100.00	100.00	100.00	100.00	100.00	100.00
3	CH2M	100.00	100.00	100.00	100.00	100.00	100.00	100.00	100.00	100.00	100.00	100.00	100.00	100.00	100.00	100.00	100.00	100.00	100.00	100.00	100.00
4	CH2M	100.00	100.00	100.00	100.00	100.00	100.00	100.00	100.00	100.00	100.00	100.00	100.00	100.00	100.00	100.00	100.00	100.00	100.00	100.00	100.00
5	CH2M	100.00	100.00	100.00	100.00	100.00	100.00	100.00	100.00	100.00	100.00	100.00	100.00	100.00	100.00	100.00	100.00	100.00	100.00	100.00	100.00
6	CH2M	100.00	100.00	100.00	100.00	100.00	100.00	100.00	100.00	100.00	100.00	100.00	100.00	100.00	100.00	100.00	100.00	100.00	100.00	100.00	100.00
7	CH2M	100.00	100.00	100.00	100.00	100.00	100.00	100.00	100.00	100.00	100.00	100.00	100.00	100.00	100.00	100.00	100.00	100.00	100.00	100.00	100.00
8	CH2M	100.00	100.00	100.00	100.00	100.00	100.00	100.00	100.00	100.00	100.00	100.00	100.00	100.00	100.00	100.00	100.00	100.00	100.00	100.00	100.00
9	CH2M	100.00	100.00	100.00	100.00	100.00	100.00	100.00	100.00	100.00	100.00	100.00	100.00	100.00	100.00	100.00	100.00	100.00	100.00	100.00	100.00
10	CH2M	100.00	100.00	100.00	100.00	100.00	100.00	100.00	100.00	100.00	100.00	100.00	100.00	100.00	100.00	100.00	100.00	100.00	100.00	100.00	100.00
11	CH2M	100.00	100.00	100.00	100.00	100.00	100.00	100.00	100.00	100.00	100.00	100.00	100.00	100.00	100.00	100.00	100.00	100.00	100.00	100.00	100.00
12	CH2M	100.00	100.00	100.00	100.00	100.00	100.00	100.00	100.00	100.00	100.00	100.00	100.00	100.00	100.00	100.00	100.00	100.00	100.00	100.00	100.00
13	CH2M	100.00	100.00	100.00	100.00	100.00	100.00	100.00	100.00	100.00	100.00	100.00	100.00	100.00	100.00	100.00	100.00	100.00	100.00	100.00	100.00
14	CH2M	100.00	100.00	100.00	100.00	100.00	100.00	100.00	100.00	100.00	100.00	100.00	100.00	100.00	100.00	100.00	100.00	100.00	100.00	100.00	100.00
15	CH2M	100.00	100.00	100.00	100.00	100.00	100.00	100.00	100.00	100.00	100.00	100.00	100.00	100.00	100.00	100.00	100.00	100.00	100.00	100.00	100.00
16	CH2M	100.00	100.00	100.00	100.00	100.00	100.00	100.00	100.00	100.00	100.00	100.00	100.00	100.00	100.00	100.00	100.00	100.00	100.00	100.00	100.00
17	CH2M	100.00	100.00	100.00	100.00	100.00	100.00	100.00	100.00	100.00	100.00	100.00	100.00	100.00	100.00	100.00	100.00	100.00	100.00	100.00	100.00
18	CH2M	100.00	100.00	100.00	100.00	100.00	100.00	100.00	100.00	100.00	100.00	100.00	100.00	100.00	100.00	100.00	100.00	100.00	100.00	100.00	100.00
19	CH2M	100.00	100.00	100.00	100.00	100.00	100.00	100.00	100.00	100.00	100.00	100.00	100.00	100.00	100.00	100.00	100.00	100.00	100.00	100.00	100.00
20	CH2M	100.00	100.00	100.00	100.00	100.00	100.00	100.00	100.00	100.00	100.00	100.00	100.00	100.00	100.00	100.00	100.00	100.00	100.00	100.00	100.00
21	CH2M	100.00	100.00	100.00	100.00	100.00	100.00	100.00	100.00	100.00	100.00	100.00	100.00	100.00	100.00	100.00	100.00	100.00	100.00	100.00	100.00
22	CH2M	100.00	100.00	100.00	100.00	100.00	100.00	100.00	100.00	100.00	100.00	100.00	100.00	100.00	100.00	100.00	100.00	100.00	100.00	100.00	100.00
23	CH2M	100.00	100.00	100.00	100.00	100.00	100.00	100.00	100.00	100.00	100.00	100.00	100.00	100.00	100.00	100.00	100.00	100.00	100.00	100.00	100.00
24	CH2M	100.00	100.00	100.00	100.00	100.00	100.00	100.00	100.00	100.00	100.00	100.00	100.00	100.00	100.00	100.00	100.00	100.00	100.00	100.00	100.00
25	CH2M	100.00	100.00	100.00	100.00	100.00	100.00	100.00	100.00	100.00	100.00	100.00	100.00	100.00	100.00	100.00	100.00	100.00	100.00	100.00	100.00
26	CH2M	100.00	100.00	100.00	100.00	100.00	100.00	100.00	100.00	100.00	100.00	100.00	100.00	100.00	100.00	100.00	100.00	100.00	100.00	100.00	100.00
27	CH2M	100.00	100.00	100.00	100.00	100.00	100.00	100.00	100.00	100.00	100.00	100.00	100.00	100.00	100.00	100.00	100.00	100.00	100.00	100.00	100.00
28	CH2M	100.00	100.00	100.00	100.00	100.00	100.00	100.00	100.00	100.00	100.00	100.00	100.00	100.00	100.00	100.00	100.00	100.00	100.00	100.00	100.00
29	CH2M	100.00	100.00	100.00	100.00	100.00	100.00	100.00	100.00	100.00	100.00	100.00	100.00	100.00	100.00	100.00	100.00	100.00	100.00	100.00	100.00
30	CH2M	100.00	100.00	100.00	100.00	100.00	100.00	100.00	100.00	100.00	100.00	100.00	100.00	100.00	100.00	100.00	100.00	100.00	100.00	100.00	100.00
31	CH2M	100.00	100.00	100.00	100.00	100.00	100.00	100.00	100.00	100.00	100.00	100.00	100.00	100.00	100.00	100.00	100.00	100.00	100.00	100.00	100.00
32	CH2M	100.00	100.00	100.00	100.00	100.00	100.00	100.00	100.00	100.00	100.00	100.00	100.00	100.00	100.00	100.00	100.00	100.00	100.00	100.00	100.00
33	CH2M	100.00	100.00	100.00	100.00	100.00	100.00	100.00	100.00	100.00	100.00	100.00	100.00	100.00	100.00	100.00	100.00	100.00	100.00	100.00	100.00
34	CH2M	100.00	100.00	100.00	100.00	100.00	100.00	100.00	100.00	100.00	100.00	100.00	100.00	100.00	100.00	100.00	100.00	100.00	100.00	100.00	100.00
35	CH2M	100.00	100.00	100.00	100.00	100.00	100.00	100.00	100.00	100.00	100.00	100.00	100.00	100.00	100.00	100.00	100.00	100.00	100.00	100.00	100.00
36	CH2M	100.00	100.00	100.00	100.00	100.00	100.00	100.00	100.00	100.00	100.00	100.00	100.00	100.00	100.00	100.00	100.00	100.00	100.00	100.00	100.00
37	CH2M	100.00	100.00	100.00	100.00	100.00	100.00	100.00	100.00	100.00	100.00	100.00	100.00	100.00	100.00	100.00	100.00	100.00	100.00	100.00	100.00
38	CH2M	100.00	100.00	100.00	100.00	100.00	100.00	100.00	100.00	100.00	100.00	100.00	100.00	100.00	100.00	100.00	100.00	100.00	100.00	100.00	100.00
39	CH2M	100.00	100.00	100.00	100.00	100.00	100.00	100.00	100.00	100.00	100.00	100.00	100.00	100.00	100.00	100.00	100.00	100.00	100.00	100.00	100.00
40	CH2M	100.00	100.00	100.00	100.00	100.00	100.00	100.00	100.00	100.00	100.00	100.00	100.00	100.00	100.00	100.00	100.00	100.00	100.00	100.00	100.00
41	CH2M	100.00	100.00	100.00	100.00	100.00	100.00	100.00	100.00	100.00	100.00	100.00	100.00	100.00	100.00	100.00	100.00	100.00	100.00	100.00	100.00
42	CH2M	100.00	100.00	100.00	100.00	100.00	100.00	100.00	100.00	100.00	100.00	100.00	100.00	100.00	100.00	100.00	100.00	100.00	100.00	100.00	100.00
43	CH2M	100.00	100.00	100.00	100.00	100.00	100.00	100.00	100.00	100.00	100.00	100.00	100.00	100.00	100.00	100.00	100.00	100.00	100.00	100.00	100.00
44	CH2M	100.00	100.00	100.00	100.00	100.00	100.00	100.00	100.00	100.00	100.00	100.00	100.00	100.00	100.00	100.00	100.00	100.00	100.00	100.00	100.00
45	CH2M	100.00	100.00	100.00	100.00	100.00	100.00	100.00	100.00	100.00	100.00	100.00	100.00	100.00	100.00	100.00	100.00	100.00	100.00	100.00	100.00
46	CH2M	100.00	100.00	100.00	100.00	100.00	100.00	100.00	100.00	100.00	100.00	100.00	100.00	100.00	100.00	100.00	100.00	100.00	100.00	100.00	100.00
47	CH2M	100.00	100.00	100.00	100.00	100.00	100.00	100.00	100.00	100.00	100.00	100.00	100.00	100.00	100.00	100.00	100.00	100.00	100.00	100.00	100.00
48	CH2M	100.00	100.00	100.00	100.00	100.00	100.00	100.00	100.00	100.00	100.00	100.00	100.00	100.00	100.00	100.00	100.00	100.00	100.00	100.00	100.00
49	CH2M	100.00	100.00	100.00	100.00	100.00	100.00	100.00	100.00	100.00	100.00	100.00	100.00	100.00	100.00	100.00	100.00	100.00	100.00	100.00	100.00
50	CH2M	100.00	100.00	100.00	100.00	100.00	100.00	100.00	100.00	100.00	100.00	100.00	100.00	100.00	100.00	100.00	100.00	100.00	100.00	100.	



Exhibit C (6 of 9)

April 23, 2018

Website: www.dcaguam.com
Email: dca@dcaguam.com

Guam Waterworks Authority
Engineering Division, Room 202
Gloria B. Nelson Public Service Building
688 Route 15, Mangilao, GU 96913

Attention: Mr. Thomas F. Cruz, Chief Engineer, GWA / George Watson, Brown & Caldwell

Subject: GWA RFP-04-ENG--2017, Construction Management Services for
Asan-Adelup-Hagatna Route 1 Sewerline Rehabilitation and
Replacement, GWA Project No. S15-002-EPA

Re: Revised Fee Proposal Related to Bid Schedule B

Hafa Adai:

Duenas, Camacho & Associates, Inc. is pleased to submit this *revised* fee proposal for GWA RFP-04-ENG-2017, Construction Management Services for Asan-Adelup-Hagatna Route 1 Sewerline Rehabilitation and Replacement, GWA Project No. S15-002-EPA. The revisions address the following changes:

1. Fee estimate for CM Services under Base Bid Schedule B – Cut and Cover Construction of New Sewer Lines based on the projected Construction Contract Completion Period from 450 to 650 calendar days.
Fee Estimate: \$870,610.41 including a \$20,000 Time & Material allowance for Material Testing
2. 2018 (current) DCA Personnel Labor and OH Rates
3. A GRT Tax Rate of 5% (recently enacted into law)

Our revised fee estimate for construction management services for Base Bid Schedule B is supported by the attached detailed fee breakdown showing an estimate of effort and expenses for a construction period of 650 calendar days and the *deletion* of Secure Safe Solutions for video surveillance (as requested by GWA). Geo-Engineering & Testing Inc. will provide geotechnical consultation and quality assurance material testing services.

The estimate of CM effort is based on the following assumptions for Base Bid Schedule B:

1. The Scope of CM services and tasks as described in the RFP;
2. Base Bid Schedule B as described in the amended Bid Form provided to DCA;
3. Revised projected construction duration of from 450 to 650 calendar days;
4. Full-time resident inspection and supplementary inspection of 50% of the resident inspection effort;
5. Current (2018) DCA personnel rates (loaded).

We look forward to negotiations.

Sincerely,

//Signed

JOHN P. DUENAS, P.E.

President

Enclosures

Exhibit C(7 of 9)

EXHIBIT A - BASE BID SCHEDULE B

DCA EXPENSES

DUENAS, CAMACHO & ASSOCIATES, INC					
CONSTRUCTION MANAGEMENT SERVICES FOR ASAN-ADELUP-HAGATNA ROUTE 1 SEWERLINE					
CM Inspection Related Expenses		Unit	Quan	Rate	Cost
1	Miscellaneous Expenses	LS			\$ 500.00
2	Mileage (Inspection)	mi	4650	\$ 0.33	\$ 1,687.95
3	Mileage (miscellaneous)	mi	3150	\$ 0.33	\$ 1,143.45
4	Pictures, video, etc.	LS			\$ 250.00
5	Reproduction	LS			\$ 3,500.00
6	Communications, etc.	LS			\$ 500.00
7	Miscellaneous Survey Materials	LS			\$ 500.00
		GRT	5.25%		\$ 424.27
		DCA EXPENSES			\$ 8,505.67

CH2M EXPENSES

CH2M					
CONSTRUCTION MANAGEMENT SERVICES FOR ASAN-ADELUP-HAGATNA ROUTE 1 SEWERLINE					
REHABILITATION AND REPLACEMENT, GWA PROJECT NO. S15-002-EPA					
		Unit	Quan	Rate	Cost
1	Travel expenses for CH2M CIPPSpec Site Visit		0	\$ 3,000.00	\$ -
2	Lodging (28 days total)	Days	0	\$ 215.00	\$ -
3	Meals	Days	0	\$ 75.00	\$ -
4	Rental Car	Days	0	\$ 50.00	\$ -
5	Misc. Expenses	Trip	0	\$ 100.00	\$ -
	Subtotal				\$ -
		CH2M EXPENSES			\$ -

Exhibit C (8 of 9)

Task No.	Task Description	Principal in Charge	Construction Manager	Project Construction Manager	Resident Construction Inspector	Construction Inspector (Maintenance)	Civil Engineer (CM Support)	Staff Engineer (CM Support)	Engineering Technician (CM Support)	Civil Environmental Scientist	Job Cost	Chief Surveyor	Resident/Assistant (CM Support)	TOTALS	CCM Project Manager (CM Support)	CCM Project Engineer (CCP Specialist)	CCM Administrative Manager (CM Support)	TOTALS	Resident Construction Engineer	Staff Engineer	Administrative Assistant	TOTAL
Leading 2018 OCA Labor Rates ****																						
CONSTRUCTION MANAGEMENT SERVICES																						
General Construction Management Tasks																						
1	Project Controls	130	375	730	0	0	0	0	0	0	0	0	0	\$ 130,000.00	0	0	0	\$ 130,000.00	0	0	0	\$ 130,000.00
2	Project Correspondence	10	0	100	0	0	0	0	0	0	0	0	0	\$ 10,000.00	0	0	0	\$ 10,000.00	0	0	0	\$ 10,000.00
3	Daily Construction Log	0	0	0	0	0	0	0	0	0	0	0	0	\$ 0.00	0	0	0	\$ 0.00	0	0	0	\$ 0.00
4	Weekly Status Report	0	0	0	0	0	0	0	0	0	0	0	0	\$ 0.00	0	0	0	\$ 0.00	0	0	0	\$ 0.00
5	Material Tracking Forms	0	0	0	0	0	0	0	0	0	0	0	0	\$ 0.00	0	0	0	\$ 0.00	0	0	0	\$ 0.00
6	Phase Plan	0	0	0	0	0	0	0	0	0	0	0	0	\$ 0.00	0	0	0	\$ 0.00	0	0	0	\$ 0.00
7	Review & Processing of Payment Requests	22	0	0	0	0	0	0	0	0	0	0	0	\$ 22,000.00	0	0	0	\$ 22,000.00	0	0	0	\$ 22,000.00
8	Conduct Project Meetings	0	0	0	0	0	0	0	0	0	0	0	0	\$ 0.00	0	0	0	\$ 0.00	0	0	0	\$ 0.00
9	Pre-construction Conference	0	0	0	0	0	0	0	0	0	0	0	0	\$ 0.00	0	0	0	\$ 0.00	0	0	0	\$ 0.00
10	Project Meetings	0	0	0	0	0	0	0	0	0	0	0	0	\$ 0.00	0	0	0	\$ 0.00	0	0	0	\$ 0.00
11	Off-site Meetings	0	0	0	0	0	0	0	0	0	0	0	0	\$ 0.00	0	0	0	\$ 0.00	0	0	0	\$ 0.00
12	Project Coordination	0	0	0	0	0	0	0	0	0	0	0	0	\$ 0.00	0	0	0	\$ 0.00	0	0	0	\$ 0.00
13	Requests for Information	0	0	0	0	0	0	0	0	0	0	0	0	\$ 0.00	0	0	0	\$ 0.00	0	0	0	\$ 0.00
14	General Compliance Monitoring	22	0	0	0	0	0	0	0	0	0	0	0	\$ 22,000.00	0	0	0	\$ 22,000.00	0	0	0	\$ 22,000.00
15	Regulations & Codes	0	0	0	0	0	0	0	0	0	0	0	0	\$ 0.00	0	0	0	\$ 0.00	0	0	0	\$ 0.00
16	Setback Lines	0	0	0	0	0	0	0	0	0	0	0	0	\$ 0.00	0	0	0	\$ 0.00	0	0	0	\$ 0.00
17	Obstruction	0	0	0	0	0	0	0	0	0	0	0	0	\$ 0.00	0	0	0	\$ 0.00	0	0	0	\$ 0.00
18	Permits	0	0	0	0	0	0	0	0	0	0	0	0	\$ 0.00	0	0	0	\$ 0.00	0	0	0	\$ 0.00
19	Insurance	0	0	0	0	0	0	0	0	0	0	0	0	\$ 0.00	0	0	0	\$ 0.00	0	0	0	\$ 0.00
20	Claims and Disputes	0	0	0	0	0	0	0	0	0	0	0	0	\$ 0.00	0	0	0	\$ 0.00	0	0	0	\$ 0.00
21	Records	0	0	0	0	0	0	0	0	0	0	0	0	\$ 0.00	0	0	0	\$ 0.00	0	0	0	\$ 0.00
22	Closeout	0	0	0	0	0	0	0	0	0	0	0	0	\$ 0.00	0	0	0	\$ 0.00	0	0	0	\$ 0.00
23	Shop Drawings/Submittals (Review and Coordination)	60	0	0	0	0	0	0	0	0	0	0	0	\$ 60,000.00	0	0	0	\$ 60,000.00	0	0	0	\$ 60,000.00
24	Submittals Evaluation and Coordination	0	0	0	0	0	0	0	0	0	0	0	0	\$ 0.00	0	0	0	\$ 0.00	0	0	0	\$ 0.00
25	Inspections & Tests	0	0	0	0	0	0	0	0	0	0	0	0	\$ 0.00	0	0	0	\$ 0.00	0	0	0	\$ 0.00
26	Resident Inspections	0	0	0	0	0	0	0	0	0	0	0	0	\$ 0.00	0	0	0	\$ 0.00	0	0	0	\$ 0.00
27	Resident Inspection	0	0	0	0	0	0	0	0	0	0	0	0	\$ 0.00	0	0	0	\$ 0.00	0	0	0	\$ 0.00
28	Special Inspections	0	0	0	0	0	0	0	0	0	0	0	0	\$ 0.00	0	0	0	\$ 0.00	0	0	0	\$ 0.00
29	Typical	0	0	0	0	0	0	0	0	0	0	0	0	\$ 0.00	0	0	0	\$ 0.00	0	0	0	\$ 0.00
30	Change Management	4	0	0	0	0	0	0	0	0	0	0	0	\$ 4,000.00	0	0	0	\$ 4,000.00	0	0	0	\$ 4,000.00
31	Change Order Review	0	0	0	0	0	0	0	0	0	0	0	0	\$ 0.00	0	0	0	\$ 0.00	0	0	0	\$ 0.00
32	Revision Change	0	0	0	0	0	0	0	0	0	0	0	0	\$ 0.00	0	0	0	\$ 0.00	0	0	0	\$ 0.00
33	Revision Change/Notification Request	0	0	0	0	0	0	0	0	0	0	0	0	\$ 0.00	0	0	0	\$ 0.00	0	0	0	\$ 0.00
34	Notification with Contractor	0	0	0	0	0	0	0	0	0	0	0	0	\$ 0.00	0	0	0	\$ 0.00	0	0	0	\$ 0.00
35	Change Order Documents	0	0	0	0	0	0	0	0	0	0	0	0	\$ 0.00	0	0	0	\$ 0.00	0	0	0	\$ 0.00
36	Establish Change Order Pricing Basis	0	0	0	0	0	0	0	0	0	0	0	0	\$ 0.00	0	0	0	\$ 0.00	0	0	0	\$ 0.00
37	Construction Survey Services	0	0	0	0	0	0	0	0	0	0	0	0	\$ 0.00	0	0	0	\$ 0.00	0	0	0	\$ 0.00
38	Construction (Planning and Resolution)	0	0	0	0	0	0	0	0	0	0	0	0	\$ 0.00	0	0	0	\$ 0.00	0	0	0	\$ 0.00
39	Control for Completion Documents	0	0	0	0	0	0	0	0	0	0	0	0	\$ 0.00	0	0	0	\$ 0.00	0	0	0	\$ 0.00
40	Substantial Completion	0	0	0	0	0	0	0	0	0	0	0	0	\$ 0.00	0	0	0	\$ 0.00	0	0	0	\$ 0.00
41	Project Meetings	0	0	0	0	0	0	0	0	0	0	0	0	\$ 0.00	0	0	0	\$ 0.00	0	0	0	\$ 0.00
42	Project Meetings	0	0	0	0	0	0	0	0	0	0	0	0	\$ 0.00	0	0	0	\$ 0.00	0	0	0	\$ 0.00
43	Project Meetings	0	0	0	0	0	0	0	0	0	0	0	0	\$ 0.00	0	0	0	\$ 0.00	0	0	0	\$ 0.00
44	Project Meetings	0	0	0	0	0	0	0	0	0	0	0	0	\$ 0.00	0	0	0	\$ 0.00	0	0	0	\$ 0.00
45	Project Meetings	0	0	0	0	0	0	0	0	0	0	0	0	\$ 0.00	0	0	0	\$ 0.00	0	0	0	\$ 0.00
46	Project Meetings	0	0	0	0	0	0	0	0	0	0	0	0	\$ 0.00	0	0	0	\$ 0.00	0	0	0	\$ 0.00
47	Project Meetings	0	0	0	0	0	0	0	0	0	0	0	0	\$ 0.00	0	0	0	\$ 0.00	0	0	0	\$ 0.00
48	Project Meetings	0	0	0	0	0	0	0	0	0	0	0	0	\$ 0.00	0	0	0	\$ 0.00	0	0	0	\$ 0.00
49	Project Meetings	0	0	0	0	0	0	0	0	0	0	0	0	\$ 0.00	0	0	0	\$ 0.00	0	0	0	\$ 0.00
50	Project Meetings	0	0	0	0	0	0	0	0	0	0	0	0	\$ 0.00	0	0	0	\$ 0.00	0	0	0	\$ 0.00
51	Project Meetings	0	0	0	0	0	0	0	0	0	0	0	0	\$ 0.00	0	0	0	\$ 0.00	0	0	0	\$ 0.00
52	Project Meetings	0	0	0	0	0	0	0	0	0	0	0	0	\$ 0.00	0	0	0	\$ 0.00	0	0	0	\$ 0.00
53	Project Meetings	0	0	0	0	0	0	0	0	0	0	0	0	\$ 0.00	0	0	0	\$ 0.00	0	0	0	\$ 0.00
54	Project Meetings	0	0	0	0	0	0	0	0	0	0	0	0	\$ 0.00	0	0	0	\$ 0.00	0	0	0	\$ 0.00
55	Project Meetings	0	0	0	0	0	0	0	0	0	0	0	0	\$ 0.00	0	0	0	\$ 0.00	0	0	0	\$ 0.00
56	Project Meetings	0	0	0	0	0	0	0	0	0	0	0	0	\$ 0.00	0	0	0	\$ 0.00	0	0	0	\$ 0.00
57	Project Meetings	0	0	0	0	0	0	0	0	0	0	0	0	\$ 0.00	0	0	0	\$ 0.00	0	0	0	\$ 0.00
58	Project Meetings	0	0	0	0	0	0	0	0	0	0	0	0	\$ 0.00	0	0	0	\$ 0.00	0	0	0	\$ 0.00
59	Project Meetings	0	0	0	0	0	0	0	0	0	0	0	0	\$ 0.00	0	0	0	\$ 0.00	0	0	0	\$ 0.00
60	Project Meetings	0	0	0	0	0	0	0	0	0	0	0	0	\$ 0.00	0	0	0	\$ 0.00	0	0	0	\$ 0.00
61	Project Meetings	0	0	0	0	0	0	0	0	0	0	0	0	\$ 0.00	0	0	0	\$ 0.00	0	0	0	\$ 0.00
62	Project Meetings	0	0	0	0	0	0	0	0	0	0	0	0	\$ 0.00	0	0	0	\$ 0.00	0	0	0	\$ 0.00
63	Project Meetings	0	0	0	0	0	0	0	0	0	0	0	0	\$ 0.00	0	0	0	\$ 0.00	0	0	0	\$ 0.00
64	Project Meetings	0	0	0	0	0	0	0	0	0	0	0	0	\$ 0.00	0	0	0	\$ 0.00	0	0	0	\$ 0.00
65	Project Meetings	0	0	0	0	0	0	0	0	0	0	0	0	\$ 0.00	0	0	0	\$ 0.00	0	0	0	\$ 0.00
66	Project Meetings	0	0	0	0	0	0	0	0	0	0	0	0	\$ 0.00	0	0	0	\$ 0.00	0	0	0	\$ 0.00
67	Project Meetings	0	0	0	0	0	0	0	0	0	0	0	0	\$ 0.00	0	0	0	\$ 0.00	0	0	0	\$ 0.00
68	Project Meetings	0	0	0	0	0	0	0	0	0	0	0	0	\$ 0.00	0	0	0	\$ 0.00	0	0	0	\$ 0.00
69	Project Meetings	0	0	0	0	0	0	0	0	0	0	0	0	\$ 0.00	0	0	0	\$ 0.00	0	0	0	\$ 0.00
70	Project Meetings	0	0	0	0	0	0	0	0	0	0	0	0	\$ 0.00	0	0	0	\$ 0.00	0	0	0	\$ 0.00
71	Project Meetings	0	0	0	0	0	0	0	0	0	0	0	0									

Exhibit C (9 of 9)

[illegible]

EXHIBIT B



Website: www.dcaguam.com
Email: dca@dcaguam.com

November 6, 2020

Miguel C. Bordallo, P.E.
General Manager, Guam Waterworks Authority
Gloria B. Nelson Public Service Building
688 Route 15
Mangilao, Guam, 96913

Attn: John Riegel P.E., Brown & Caldwell Project Manager

Subject: **RFP 04-ENG-2017, GWA S15-002-EPA, Asan-Adelup-Hagatna – Route 1 Sewer Rehabilitation and Replacement**

Ref: **Change Order for Construction Management Services for the Asan-Adelup-Hagatna – Route 1 Sewer Rehabilitation and Replacement – Phase II**

Hafa Adai Mr. Riegel,

At the request of GWA, Duenas, Camacho and Associates (DCA) is submitting this change order proposal for the referenced services. This change order is intended to provide services for Phase II of the subject project in accordance with DCA's construction management services contract with GWA dated July 31, 2018. The construction duration used for this proposal is 425 calendar days. The fee for this change order proposal is: **\$571,550.**

Sincerely,

Kenneth M. Rekdahl, P.E.
Vice-President
Duenas, Camacho & Associates, Inc.

Att:
Fee Breakdown

Task Description		Principal	Crew Chief	Computer	Cartographer	Instrument Man	Survey Tech	Survey Researcher	Survey Aide	Administrative Assistant	Secretary	
		PRIN	SPC	COMP	CART	INSM	STECH	SVYRSR	SAID	ADM	TYP	Total
Direct Labor Rates >>>>		No. of Dws	\$ 183.00	\$ 61.00	\$ 75.00	\$ 67.00	\$ 54.00	\$ 58.00	\$ 53.00	\$ 34.00	\$ 72.00	\$ 67.00
Total Sheet Count and Effort >>>		0	0	0	0	0	0	0	0	0	0	\$ 527,636.00
A.	Pre Construction Services	0	0	0	0	0	0	0	0	0	0	\$ 13,352.00
1	CM Plan											\$ 6,528.00
2	QA Plan											\$ 4,352.00
3	Bidding Support											\$ -
4	Document Review											\$ 2,472.00
5												\$ -
6												\$ -
B.	Construction Phase Services	0	0	0	0	0	0	0	0	0	0	\$ 503,976.00
1	Project records and Document Control (Procure), Weekly	60										\$ 3,266.00
2	Daily Construction Reports, week	55										\$ 11,156.00
3	Progress Photo Logs, week	60										\$ 6,720.00
4	Submittal, ea	15										\$ 4,560.00
5	Shop Drawing review, day	15										\$ 9,240.00
6	Project Schedule (month)	18										\$ 5,472.00
7	Payment Request, ea (month)	14										\$ 11,648.00
8	Payroll Review, ea	14										\$ 3,136.00
9	Project meetings, week	60										\$ 30,060.00
10	As built control, week	50										\$ 4,450.00
11	RFIs, ea	20										\$ 12,160.00
12	Compliance monitoring, week 80% of duration	340										\$ 120,020.00
13	Claims and disputes											\$ 15,360.00
14	Change order negotiation and review											\$ 9,600.00
15	DCVR											\$ 3,840.00
16	Compliance monitoring (days), 80% of duration X1.1	340										\$ 221,408.00
17	Testing QA											\$ 3,840.00
18	Acceptance											\$ 6,400.00
19	Construction Survey services, daily site visit	8										\$ 12,288.00
20	Project Closeout											\$ 7,560.00
21	Training and Warranty											\$ 1,792.00
22												\$ -
23												\$ -
C	Post Construction Services	0	0	0	0	0	0	0	0	0	0	\$ 10,308.00
1	Final Report											\$ 3,576.00
2	Record Drawings											\$ 1,788.00
3	Closeout Meetings											\$ 4,944.00
4												\$ -
5												\$ -
6												\$ -
7												\$ -
9												\$ -
Subconsultants		DL	COST SUMMARY									Direct Labor \$ 527,636.00
S.1	Conc/GEO Testing		\$ LABOR									\$ 527,636.00
S.2	TRMA		OVERHEAD @		Included							
S.3	CH2		\$									
S.4	EMCE (ESTIMATE)		\$ SUBCONSULTANTS		Subtotal, Subconsultants+DCA Handling							\$ -
S.5			Subtotal		Row 1 + Row 3							\$ 527,636.00
S.6			PROFIT		Included							
S.7												
Subtotal - Subconsultants		\$ -	\$ EXPENSES		Expenses							\$ 15,404.00
Coordination & Handling @		5%	\$ Subtotal		Row 4 + Row 6							\$ 543,040.00
Subtotal - Subconsultants + DCA Handling			\$ GRT		@	5.25%						\$ 28,509.60
Total												\$ 571,549.60
Say												\$ 571,550



Duenas, Camacho and Assocait

Option 1

Year 1

ACV: 4.2 million

Name	Price
Project Management Pro	\$7,925
Quality & Safety	\$2,510
Total	\$10,435

Total Price: **\$10,435**

Option 2

Year 1

ACV: 4.2 million

Name	Price
Project Management Pro	\$6,700
Quality & Safety	\$2,250
Total	\$8,950

Total Price: **\$8,950**

Procore Products

Connect the entire business process from bidding to closeout with every member of your team working together in the same system.

TOOLS INCLUDED WITH ALL PRODUCTS*

DIRECTORY

Everyone's digits, under the control of yours.

DOCUMENTS

When documents go digital, nothing gets lost.

APP MARKETPLACE

With over 150 partner solutions in our App Marketplace, connect with what works best for you—even if we don't build it.

TASKS

Track and manage every coordination-related step in your process.

REPORTS

Insights to help you analyze every detail.

* Excluding Invoice Management, Design Coordination and BIM.

PROJECT MANAGEMENT

Project Management Pro

RFIs

RFI software to remind, record, and remove excuses.

DAILY LOG

Capture everything you need to report to the office.

DRAWINGS

Revisions won't need markers, scissors, sticky notes, or tape.

TIMECARD

Fast time tracking for the project management team.

SUBMITTALS

Don't let inaccuracy sink your projects.

MEETINGS

Manage all aspects of your project meetings.

PUNCH LIST

Streamline construction with punch list software.

PHOTOS

Capture your questions, skills, and results in a snap.

SPECIFICATIONS

Intelligent Spec Management—save time while doing more.

SCHEDULE

Minimize confusion with integrated scheduling.

EMAILS

Open your inbox to everything you need to know.

TRANSMITTALS

Don't lose sleep over your important documents.

*Project Management Starter is also available - includes RFIs, Daily Log, Drawings, Punch List, Photos and Specifications.

PROCORE

procore.com | 866 477 6267

PROJECT MANAGEMENT

Quality & Safety

INSPECTIONS

Proactively identify hazards before they injure more than your reputation.

OBSERVATIONS

Track, assign, and report upon multiple types of observations and corrective actions on the fly.

INCIDENTS

Digitally capture and manage incidents easily and accurately.

DAILY LOG

Capture everything you need to report to the office.

FORMS

Simple to complex fillable PDF forms at your fingertips.

SCHEDULE

Minimize confusion with integrated scheduling.

PHOTOS

Capture your questions, skills, and results in a snap.

Design Coordination

COORDINATION ISSUES

Identify and resolve constructability issues prior to construction.

BIM

MODELS

Extremely performant BIM viewer.

FINANCIAL MANAGEMENT*

Project Financials

COMMITMENTS

Real-time statuses and values of all contracts and purchase orders.

CHANGE EVENTS

The new standard in construction for managing potential costs as they occur.

BUDGETS

Avoid profit erosion with accurate, configurable budgets.

CHANGE ORDERS

Reduce unrecoverable change orders with quicker approvals.

PRIME CONTRACT

Replace stacks of paper and printing costs with digital contract management.

COST MANAGEMENT

Avoid the price of being over budget with cost management.

Invoice Management

OWNER INVOICING

Prefill owner invoices with approved subcontractor invoices.

*Accounting Integrations available - additional fees apply.

SUBCONTRACTOR INVOICING

Empower the trades to be proactive about monthly invoices.

PROCORE

procore.com | 866 477 6267

PRECONSTRUCTION

Prequalification

PREQUALIFICATIONS

Manage the entire qualification process from forms to approvals.

PREQUALIFICATION PORTAL

Complete and submit qualification forms on a secure online platform.

Bid Management

BIDDING

Manage the entire bidding process from bid package creation to bid award.

PLANROOM

Access bid package details, files, and communications in order to submit a bid.

RESOURCE MANAGEMENT

Field Productivity

TIMESHEETS

Track employee and crew time for all projects on mobile or web.

T&M TICKETS

Document and track out-of-scope work to get paid for everything you do.

CREWS

Add, group, and edit crews—with one mobile, flexible tool.

TIMECARD

Fast time tracking for the project management team.

PRODUCTION TRACKING

Compare budgeted versus actual quantities to see percentage complete against each cost code.

PLATFORM

Analytics

PROCORE ANALYTICS

Leverage Analytics to turn project data into business insight.

DATA EXTRACT

Extract and combine data from Procore and across your tech stack.

PROCORE

procore.com | 866 477 6267